

BOOK MODERNO

Aster 

Aster 



Aster 

Aster, Designed To Build Emotions,
dallo Story Telling allo Story Making

Razionalismo Architettonico e Personal Mood, questa è la miglior definizione del nostro brand. Tecnologia, tecnica, perfezione funzionale, ergonomia, movimenti, sono concetti e dettagli a noi ben noti e certamente parte fondante del nostro successo.

In Aster siamo andati oltre.

Abbiamo sperimentato percorsi nuovi, affiancando alla perfezione tecnica e funzionale delle nostre collezioni, la magia e il fascino dell'irrazionalità, dell'atmosfera, della provocazione. La nostra storia parte da molto lontano. Da quando abbiamo cominciato a raccontare le nostre collezioni e ciò che di esse ci affascinava. Abbiamo raccontato il perché le abbiamo volute così. Che fossero riferite ad un particolare periodo storico oppure ad un legno pregiato. Alla crudezza e forza di un elemento in ferro o alla dolcezza ed al fascino del glamour.

Abbiamo donato ad ognuna delle nostre collezioni una chiave di lettura, un significato, un'anima.

*Aster, Designed to build Emotions,
from Story Telling to Story Making*

Rationalist Architecture infused with intimate Moods; the best way to sum up our brand. We take account of the smallest of details, covering technology, technique, functional perfection, ergonomics, movement, each and every one of these concepts is taken care of, perhaps this is at the heart of the secret of our success.

At Aster we take things just a little bit further.

We love to experiment, taking new paths, mixing things up by adding both a touch of the unexpected and a hint of magic to the quality techniques and functional perfection that go into building each of our collections.

Our story dates back to quite some time ago. From the time we first began making collections, sharing stories to draw people in. We shared these experiences because that's how we wanted things to be. Each individual story was shaped with reference to one historical period or another, or shaped by one material or another, precious woods, strong powerful irons and metals, or sweet caresses given by moments of glamour.

With each different collection we breathed life into the stories behind them, giving each one meaning, a reading, a soul.

Brera Academy

The contemporaneity and internationality of being "Made in Italy". Le linee geometriche della collezione, creano giochi volumetrici che enfatizzano la tridimensionalità dell'anta.

Le colonne funzionali con ante a diverso spessore, creano un gioco di luce e profondità, trasformandosi talvolta in una boiserie a parete.

La contemporaneità e internazionalità dell'essere "Made in Italy". The geometric lines of the collection create volumetric games that emphasize the three-dimensionality of the door. Functional columns and doors with different thickness create a play of light and depth, sometimes turning into a wall paneling.















Brera Academy

The contemporaneity and internationality of being "Made in Italy". Le linee geometriche della collezione, creano giochi volumetrici che enfatizzano la tridimensionalità dell'anta. Le colonne funzionali con ante a diverso spessore, creano un gioco di luce e profondità, trasformandosi talvolta in una boiserie a parete.

La contemporaneità e internazionalità dell'essere "Made in Italy". The geometric lines of the collection create volumetric games that emphasize the three-dimensionality of the door. Functional columns and doors with different thickness create a play of light and depth, sometimes turning into a wall paneling.



Contempora

Il legno, il cemento, le pietre, i metalli: materia pura, ideale per definire ciò che è essenziale. Piacere per gli occhi e invito alla sensazione tattile.

Wood, concrete, stone, metal: pure materials, ideally matched to define the essence of simplicity. For great looking design you'll want to reach out and touch.











Contemporanea

Esprime l'essenza dei materiali e la purezza delle forme.
Il legno pregiato dialoga perfettamente con le laccature e la pietra naturale.
Una moderna armonia estetica e funzionale.

Celebrating essential lines, materials and purity of form.
Where sleekly sophisticated wood forms a perfect dialogue
with polished lacquered finishes and natural stone.
For a highly functional modern yet harmonious look.



















Laccato Fondente Opaco 820 – Legno Dust Brown E83 - Top Acciaio Satinato AC1









Atelier

E' l'immaginazione l'unico limite alla versatilità. Atelier presenta un'ampia gamma di superfici: bellissime, resistenti e di eccezionale naturalezza. Un'infinita possibilità di progettazione rende unico ogni ambiente.

Where the only limit is your own imagination. Atelier comes in a wide range of surfaces: all great-looking, natural, and highly durable. Offering a myriad of design choices to create your very own unique kitchen space.







Atelier

La modularità ridisegna gli spazi, definisce in modo personale e unico gli ambienti. La funzionalità di Atelier si coniuga con le esigenze del nostro tempo, con i bisogni del tuo tempo.

With its modular take on redesigning space Atelier allows you to create a look in keeping with your own taste and the available space. Atelier's easy functionality blends with today's modern necessities, as well as meeting your own personal needs.







Atelier

Offre al mondo esterno la tua visione del vivere, aperta alle possibilità, versatile, accogliente e insieme riservata quanto basta. Spazio da vivere e condividere.

Atelier definisce il quotidiano, dove bellezza ed efficienza dialogano, si completano, vivono insieme a te.

Helps you show the world your vision when as you create a versatile living space open to multiple possibilities allowing you make it as welcoming or reserved as you like. For a living space you can share and enjoy. Atelier defines your daily life, with practical features that still let beauty shine in a harmonious ongoing dialogue.



Factory

"Works in process" è la miglior definizione di Factory. La contaminazione di forme e di materia esprime un'idea di bellezza in movimento. Il passato, anche recuperato, rivive nell'oggi che si apre al futuro. Ridefinire lo spazio, ricercare il ritmo del proprio tempo, immaginarsi nel domani con le radici nella materia di cui è fatto l'oggi. Factory è l'espressione di un cambiamento che non rinnega la sua origine.

"Works in process" is the best way to define Factory. With a riot of different forms and materials all beautifully blended together to form one great movement. The reclaimed past lives on once again turning to face the future. Redefining each space, seeking out the rhythm of its own time, picturing its future self tomorrow while never letting go of the roots in the past that lie at its heart. Factory is a living expression of change which still embraces the warm memories of its origins.































NEW YORK, USA - VIA 57WEST at 625 west 57th st – 709 units, kitchens and baths
 LAS VEGAS, USA - The Residences at Mandarin Oriental at the Las Vegas City Center – 162 units, kitchens and baths
 LONDON, UK - The Chelsea Waterfront at Lots Road – 82 units, kitchens and baths
 MIAMI, USA – The Glass at 120 Ocean Dr. – 11 Penthouses, kitchens, baths and bars
 NEW YORK, USA - The Mercedes House at Clinton Park – 864 units, kitchens and baths
 BANGALORE, India – Embassy One Four Seasons Private Residences – 123 units, kitchens, baths and closets
 LONDON, UK – North Wharf Gardens II at Paddington, North Wharf Rd – 335 units, kitchens and baths
 TIANJIN, China – Tianjin Thomson Riviera at Tianjin – 718 units, kitchens and baths
 NEW YORK, USA - The Printing House at 421 Hudson st - 65 units, kitchens ad baths
 LOS ANGELES, USA – 825 South Hill st. – 516 units, kitchens and baths
 MILANO, Italia - EXPO 2016 Milano – 1600 public services
 HAINAN, China – Sanya Ludao at Hainan - 498 units, kitchens and baths
 TURKS & CAICOS, BWI - Gansevoort Wymara - 68 units, kitchens, baths, furniture
 DALLAS, USA – The Windrose at Legacy – 85 units, kitchens and baths
 ST. LUCIA, BWI - The Landings – 248 units, kitchens and baths
 NEW YORK, USA – Hallets Point Building 1 – 500 units, kitchens and baths
 VANCOUVER, Canada – Cascade City – 271 units, kitchens and baths
 TOKYO, Japan - Yamada Corporation apartments, Tokyo – 1500 units
 NEW YORK, USA - River & Warren at Battery Park – 162 units, kitchens and baths
 MOSCOW, Russia - Mercury Tower at Mercury City, Moscow – 137 units
 BROOKLYN, USA - 51 Jay St. in Dumbo – 74 units, kitchens and baths
 ST. LUCIA, BWI - Capella Marigot Bay Resort & Marina, - 57 units, kitchens, baths, furniture
 NEW YORK, USA - Steiner East Village at 438 E. 12th st., - 83 units, kitchens and baths
 MIAMI, USA - One Ocean South Beach in Miami, FL – 46 units, kitchens and baths
 OTTAWA, Canada – Roca Homes – 18 units, kitchens and baths
 MIAMI, USA - Residences at Saxony Faena – 17 units, kitchens, baths and bars
 NEW YORK, USA – ORIANA at River Tower 420 East 54th st. – 394 units, kitchens and baths
 PITTSBURGH, USA - The Vitmore Baumhaus, 5500 Baum Blvd. – 126 UNITS, kitchens and baths
 SCIACCA, Italia - Verdura Forte Village, Sciacca – 203 bedrooms
 NEW YORK, USA - 351-355 West 54th St. – 33 units, kitchens
 SAN FRANCISCO, USA - Rowan at 346 Potrero Avenue – 70 units, kitchens and baths
 LOS ANGELES, USA - Ten50 at 1050 South Grand Avenue – 149 units, kitchens and baths
 SAN FRANCISCO, USA - One Mission Bay – 350 units, kitchens and baths
 SAN FRANCISCO, USA - 33-41 Tehama – 403 units, kitchens and baths
 LOS ANGELES, USA - The Liddel at 10777 Wilshire – 56 units, kitchens and baths
 SAN FRANCISCO, USA - The Radiance at 330 Mission Bay – 99 units, kitchens and baths
 SAN FRANCISCO, USA - 420-480 Madrone at Mission Bay – 327 units, kitchens and baths
 SAN FRANCISCO, USA - Knox at 645 Texas in Dogpatch – 91 units, kitchens and baths
 LOS ANGELES, USA - Amero at 2559 Van Ness – 1501 Filbert St. – 27 units, kitchens and baths
 SAN FRANCISCO, USA - Jasper at 45 Lansing Street – 320 units, kitchens and bath
 NEW YORK, USA - 5th on the park, New York, NY, USA – 148 units
 NEW YORK, USA - 14th West 14th st, New York, NY, USA – 30 units
 NEW YORK, USA - FDB 2280 Frederick Douglass Blvd, New York, NY, USA – 89 units
 NEW YORK, USA - 25-30 Washington, New York, NY – 106 units
 MIAMI, USA - 350 Meridian, Miami, FL - 8 units
 MIAMI, USA - Marea, Miami, FL - 28 units
 MIAMI, USA - Cosmopolitan Towers Miami FL – 236 units
 MIAMI, USA - Ten Museum Park Miami FL – 167 units
 MIAMI, USA - Midtown Lofts Miami FL – 96 units
 FT LAUDERDALE, USA - Europa by the sea Ft. Lauderdale FL – 50 units
 FT LAUDERDALE, USA - Palazzo Las Olas Ft. Lauderdale FL – 173 units
 PHILADELPHIA, USA - Murano, Philadelphia, PA, USA – 294 units
 ALEXANDRIA, USA - Midtown Alexandria Station VA – 369 units
 BETHESDA, USA - Midtown Bethesda North VA – 230 units
 RESTON, USA - Midtown Reston Town Center VA – 27 units
 CHARLESTOWN, USA - 15 Bartlett st Charlestown VA – 25 units
 GLOUCESTER, USA - Gloucester Village MA- 34 villas
 BOSTON, USA - West 2nd st. South Boston MA – 74 units
 BOSTON, USA - 210 South st. Boston MA – 54 units
 BOSTON, USA - Lofts at 56 South st. Boston MA – 15 units

BOSTON, USA - 154 west 2nd St. Boston MA – 73 units
 BOSTON, USA - Bay State Rd Boston MA – 15 units
 BOSTON, USA - Commercial st. Boston MA – 13 units
 BOSTON, USA - Franklin st. Boston MA – 18 units
 LAS VEGAS, USA - Allure, Las Vegas, NV, USA – 472 units
 LAS VEGAS, USA - Newport Lofts, Las Vegas, NV, USA – 184 units
 SANTA MONICA, USA - The Seychelle at 1755 Ocean Ave, Santa Monica, CA – 93 units
 WINNIPEG, Canada - Mainstay Suites, Winnipeg, MB – 102 units
 NEW DELHI, India - Iconic by Mahagun, New Delhi – 32 units
 NEW DELHI, India – Paras Tiera, New Delhi – 670 units
 CHENNAI, India - Egattur OMR, Chennai, India – 2000 units
 MUMBAI, India - Estonia Kandivali, Mumbai, India – 100 units
 MUMBAI, India - Rivona Kandivali, Mumbai, India – 100 units
 MUMBAI, India – Richmond Tower, Mumbai, India – 80 units
 ST LUCIA, BWI - Mont Du Cap, St. Lucia, BWI – 34 villas
 ST LUCIA, BWI - Allamanda at Anse Galet St. Lucia BWI – 29 units
 TURKS & CAICOS, BWI - Belvedere St. Charles Turks & Caicos – 27 units
 MANAMA, Bahrain – Lagoon Heights – 110 units, delivering 2017
 MANAMA, Bahrain - Stout Apartments in Juffair, Bahrain – 48 units
 MANAMA, Bahrain - Tulip Hotel, Bahrain - 67 units
 MANAMA, Bahrain - Zawia 3, Bahrain – 231 units
 DUBAI, UAE - Burj Al Arab, Dubai, UAE – 120 bedrooms
 DUBAI, UAE - Nurai Island by Zaya, Dubai, UAE – 67 homes
 BEIRUT, Lebanon - Fouad Zeidan S & J, Beirut – 93 units
 KUWAIT CITY, Kuwait - Tamdeem, Kuwait City – 96 units
 KUWAIT CITY, Kuwait – Holidays resort, Kuwait City – 700 bedrooms, 300 kitchens
 LONDON, UK - Meritas Court Salem Rd, London, UK – 15 units
 LONDON, UK - Twelve Palace Street – 21 units
 LONDON, UK - Halcyon at Holland Park, London – 12 units
 CONWY, UK - Deganwy Quay, Conwy – 71 villas
 BOURNEMOUTH, UK - Winchester st., Bournemouth – 14 units
 OSLO, Norway – Rosenhoff, Oslo – 33 units
 OSLO, Norway - Til Leie I Vika Quartalet, Oslo – 64 units
 OSLO, Norway – Funkisgaarden, Oslo – 135 units
 OSLO, Norway - Sofies Hage, Oslo – 68 units
 OSLO, Norway - Gimle Hus, Oslo – 48 units
 COPENHAGEN, Denmark - NCC Ab Yen, Copenhagen – 240 units
 COPENHAGEN, Denmark – Nikolineparken, Copenhagen – 164 units
 COPENHAGEN, Denmark - Osterbro Have, Copenhagen – 55 units
 TOLOUSE, France - Residence Akerys, Les Jardins du Gramont, Toulouse – 248 units
 SOFIA, Bulgaria - Hotel Kempinski Sofia – 421 bedrooms
 BUDAPEST, Hungary - St. George Boutique Hotel, Budapest – 26 suites
 ISTANBUL, Turkey - Akyapi, Istanbul – 47 units
 ALGERI, Algeria - Sheraton Oran Hotel – 321 bedrooms
 MARRAKECH, Morocco - Hotel Ibis Moussafir, Marrakech – 103 bedrooms
 CAPO VERDE - Paradise Beach, Capo Verde – 360 units
 MAR DEL PLATA, Argentina - Edificio Santangelo II, Mar Del Plata – 20 units
 MONTESILVANO, Italia - Hotel Serena Majestic, Montesilvano – 20 suites, 196 kitchens and bedrooms
 GINOSA MARINA, Italia - Villaggio Torreserena, Ginosa Marina – 200 bedrooms, 8 kitchens
 MILANO, Italia - Campus Martinitt, Milano – 194 bedrooms, 6 kitchens
 ORISTANO, Italia - Golf Hotel, Is Arenas Oristano – 105 bedrooms, 62 kitchens
 VERONA, Italia - Villa Bartolomea, Verona – 87 bedrooms
 CERVIA, Italia - Hotel Dante, Cervia – 244 bedrooms
 SIBARI, Italia - Bluserena Sibari Green Village, Sibari – 360 bedrooms
 ROMA, Italia - Comando Generale Guardia di Finanza - 105 offices
 ROMA, Italia - Ministero degli Interni Aeronautica ed Esercito Roma – 950 bedrooms

Aster  to be continued...

















Aster, Designed To Build Emotions,
dallo Story Telling allo Story Making

Responsabilità, perché ogni progetto è unico e irripetibile e non esiste una seconda occasione per eccellere. Creatività, come scelta di stile e passione profonda. Coraggio, nel credere che nulla sia impossibile. Consapevolezza, di sapere quanta strada abbiamo fatto e quanta ancora ne abbiamo davanti. Innovazione, per essere leader e non inseguitori. Etica, perché la forma e il contenuto coincidono.

Insieme, abbiamo creato le condizioni del nostro successo.
Insieme abbiamo creato le condizioni del Vostro successo.

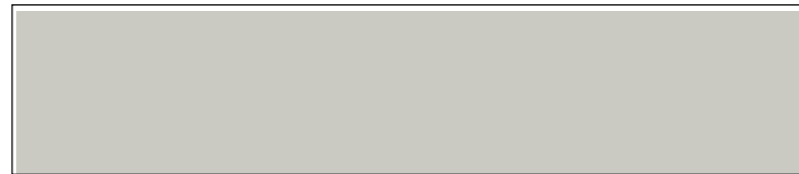
Taking responsibility, so that each single project is unique, never to be repeated, there are no second chances when it comes to excellence. Creativity, as a style choice born out of a deep passion for what we do. Courage, in the belief that nothing is impossible. Awareness, of both how far we have come, and how far we still have to go. Innovation, so that we lead rather than follow.
Ethics, making sure that form and content coincide.

Together, we have created the conditions for our success.
Together, we have created the conditions for your success.

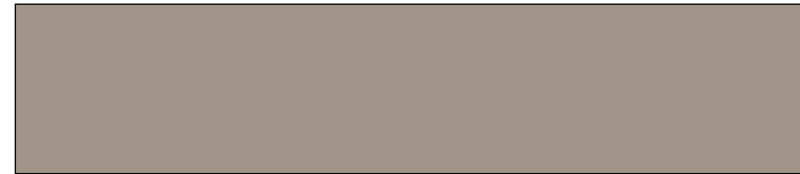
ATELIER - Texture Melaminico - Melamine Texture - Price Group 0



Bianco Light - A53



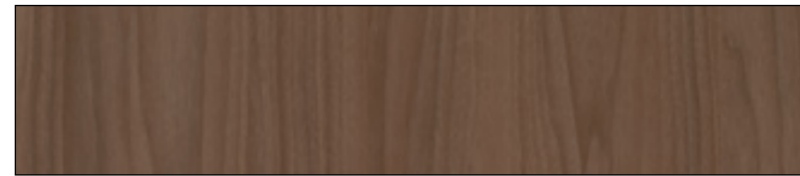
New Grigio Perla Light - A54



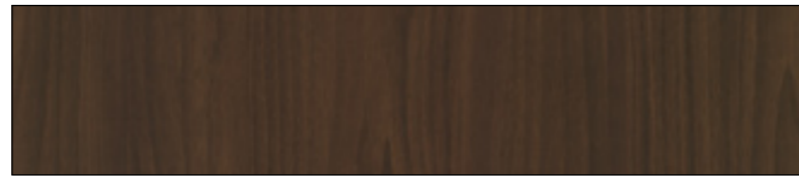
Amani Light - A55



Canapa Light - A56

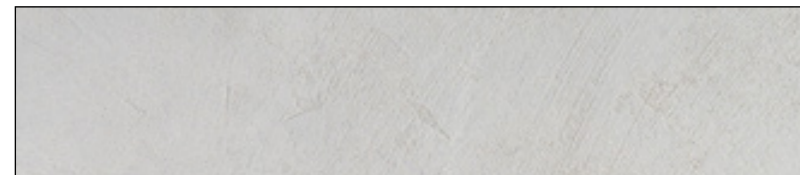


Noce Grigio (v.v.) - A57

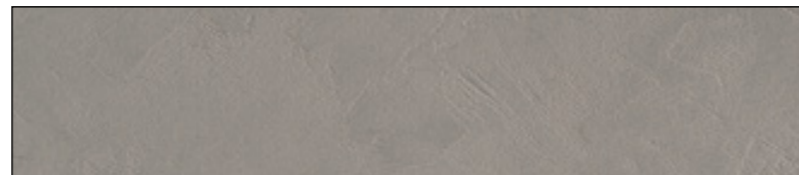


Noce Termo (v.v.) - A58

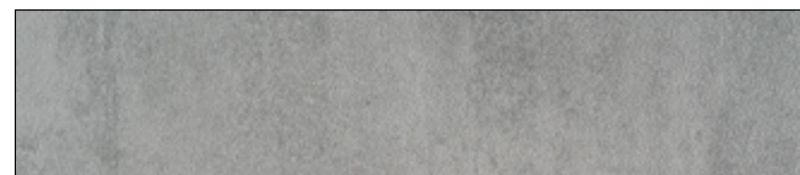
ATELIER - Texture Decors - Price Group 1



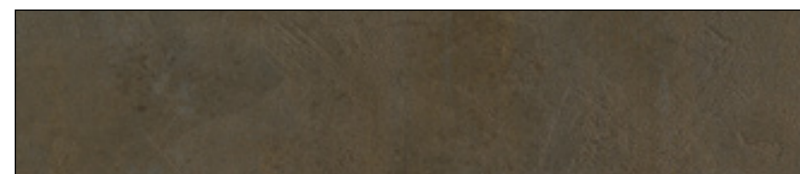
Cemento Bianco Light (v.v.) - A77



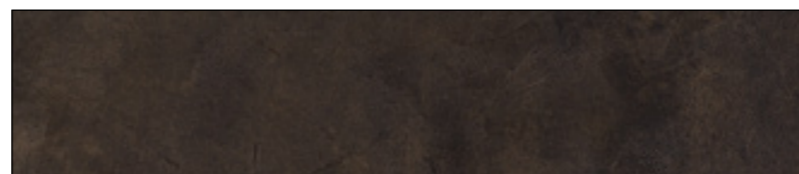
Cemento Tortora Light (v.v.) - A78



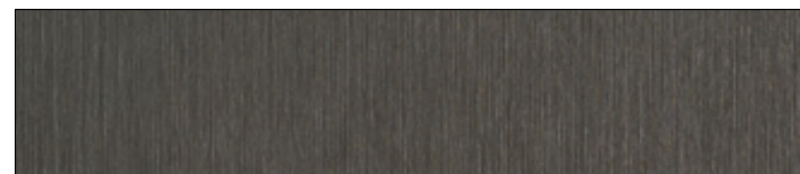
Cemento Grigio Light (v.v.) - A79 (*)



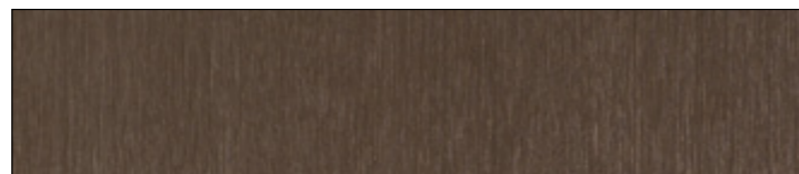
Ottone Antico (v.v.) - A80 (*)



Ottone Brown (v.v.) - A81



Acciaio Rigato (v.v.) - A82



Bronzo Rigato (v.v.) - A83

(*) Disponibili Anche Per Brera (vedi listino prezzi)

ATELIER - Texture Decors - Price Group 1



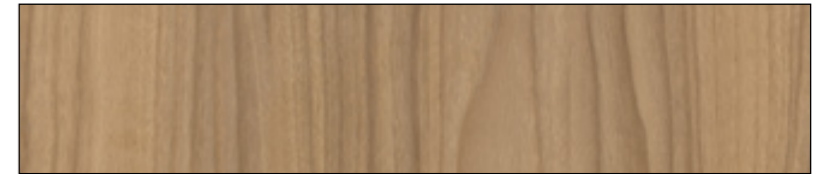
Grigio Nodato (v.v.) - A84



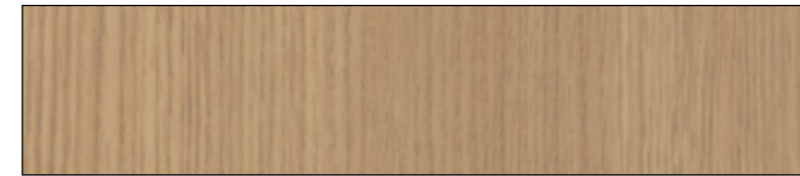
Blonde Nodato (v.v.) - A85



Noce Bianco (v.v.) - A86



Noce Crudo (v.v.) - A87



Rovere Naturale (v.v.) - A88



Rovere Ice (v.v.) - A89



Olmo Avion (v.v.) - A90 (*)



Olmo Nava (v.v.) - A91 (*)

ATELIER - Laccati Opachi/Lucidi - Matt/Glossy Lacquered - Price Group 2/3



Bianco - S01/S11



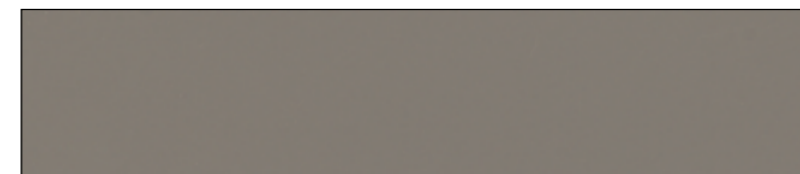
Grigio Perla - S02/S12



Canapa - S03/S13



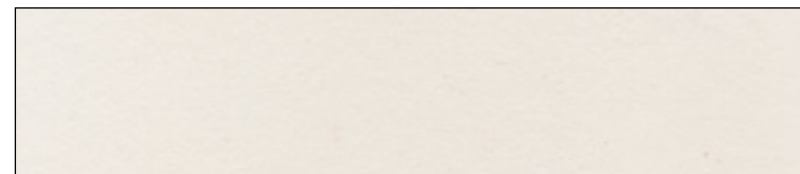
Grigio Scuro Porfido - S05/S15



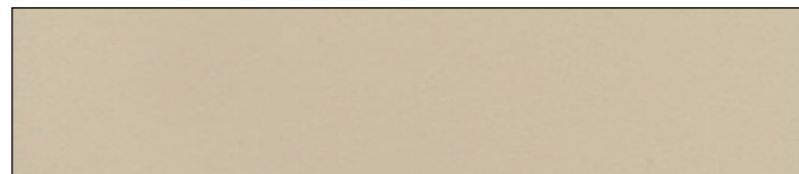
Amani - S06/S16

(*) Disponibili Anche Per Brera (vedi listino prezzi)

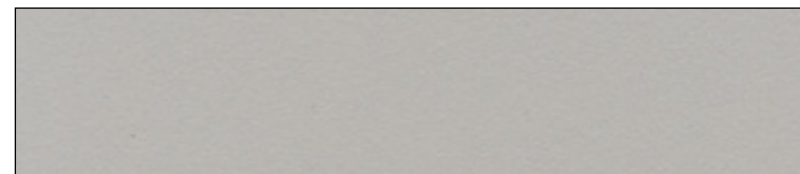
ATELIER - Laminato Bordo Unicolor - Laminate With Unicolor Edge Band - Price Group 3



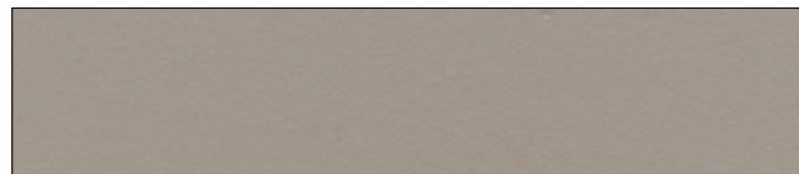
Bianco Assoluto - U10



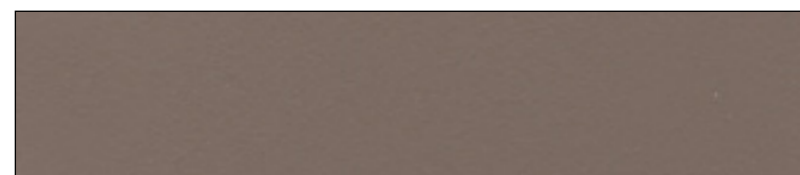
Panna - U05



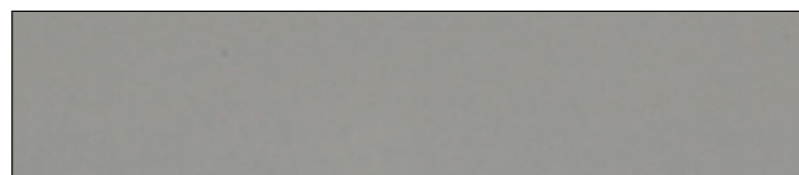
Grigio Chiaro - U09



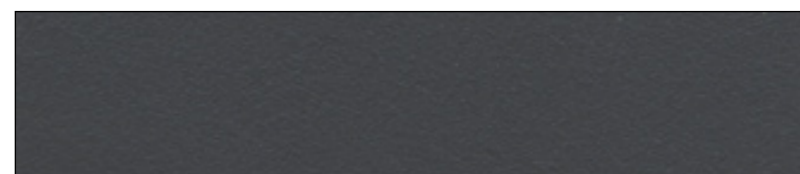
Visone - U11



Tortora - U12



Grey - U13



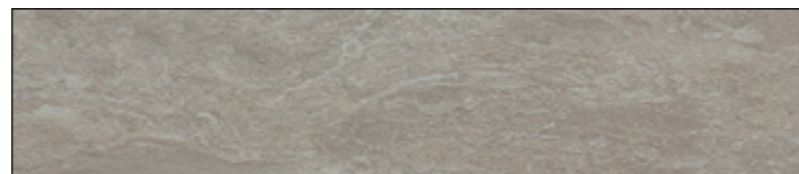
Grigio Antracite - U04



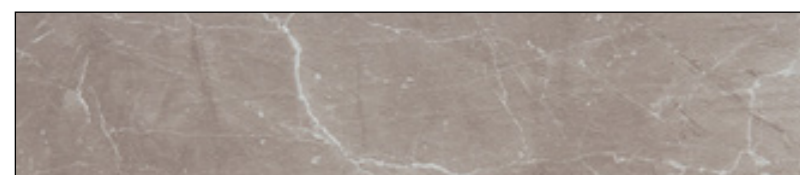
Laminato Lavagna - LV2



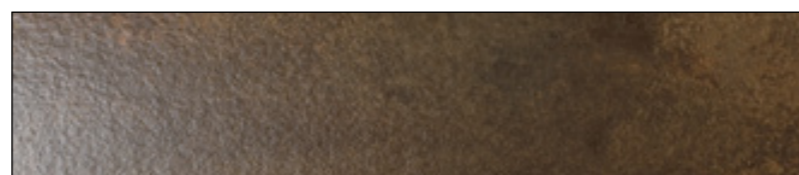
Cemento Chiaro - U26



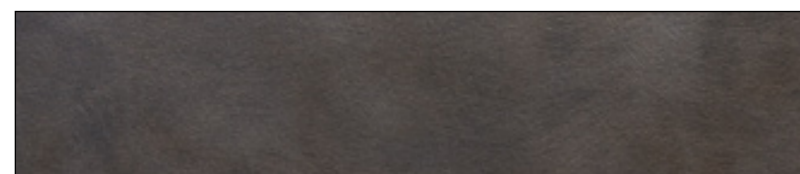
Evora - U18



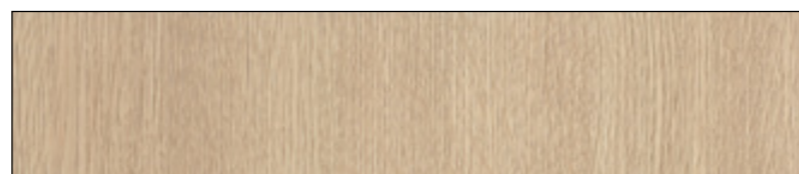
Botticino - U20



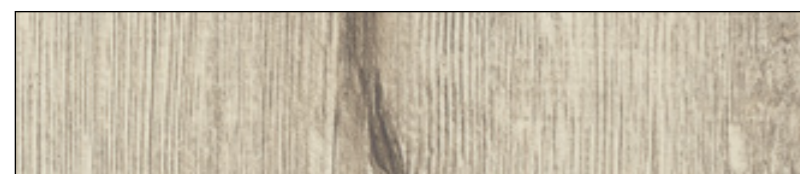
Ossido - U43



Corten Grigio - U42



Rovere Naturale - U36



Rovere California - U63



Old America - U37

ATELIER - Laminato Bordo Unicolor - Laminate With Unicolor Edge Band - Price Group 3



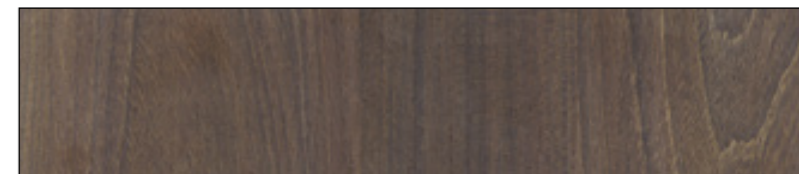
Rovere Monet - U59



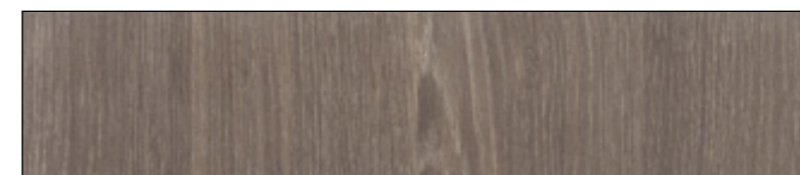
Rovere Invecchiato Torchio - U39



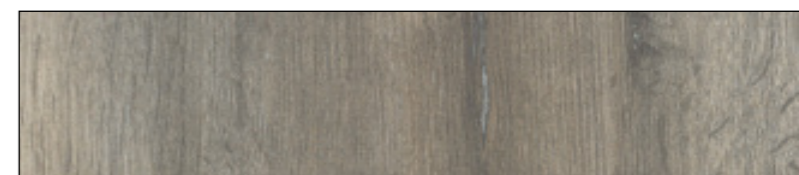
Rovere Invecchiato Barrique - U38



Olmo Scuro - U35



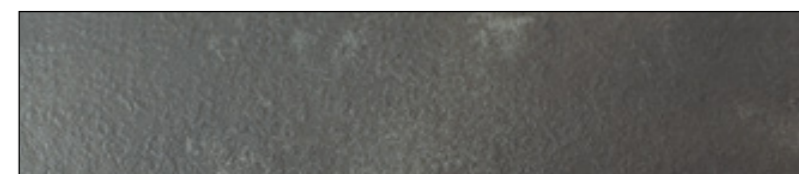
Rovere Tabacco - U31



Rovere invecchiato Grey - U41

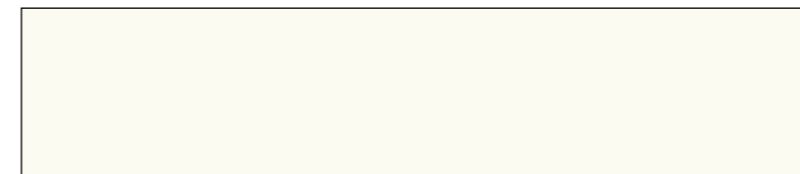


Cemento Scuro - U27

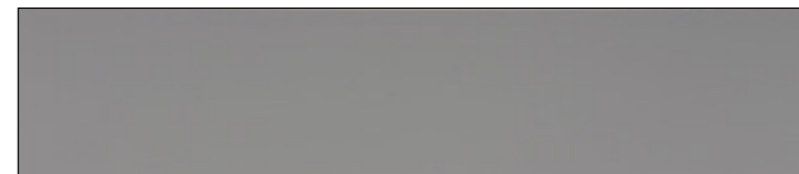


Ferro - U28

ATELIER - Fenix 2 lati/1 lato - Fenix 2 Sides/1 Side - Price Group 5/4



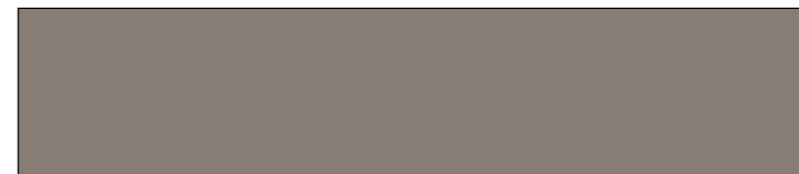
Bianco - F01/F21(*)



Grigio Perla - F11/F31 (*)



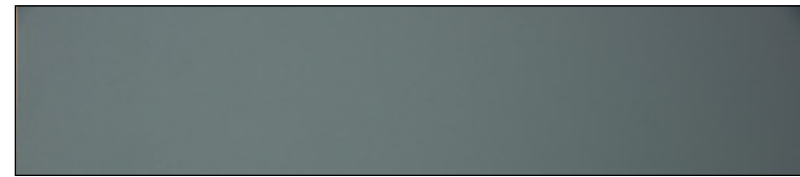
Canapa - F12/F32 (*)



Smoke - F06/F26 (*)

(*) Disponibili Anche Per Brera (vedi listino prezzi)

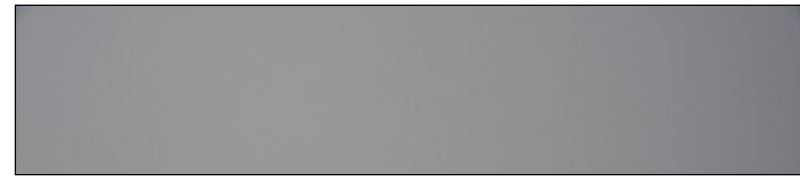
ATELIER - Fenix 2 lati/1 lato - Fenix 2 Sides/1 Side - Price Group 5/4



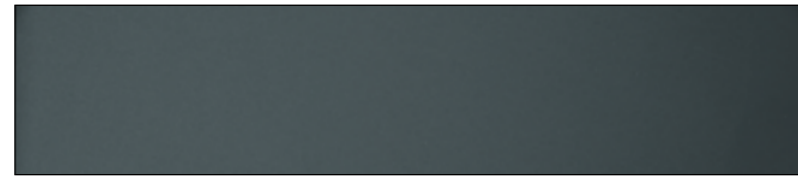
Muschio - F13/F33 (*)



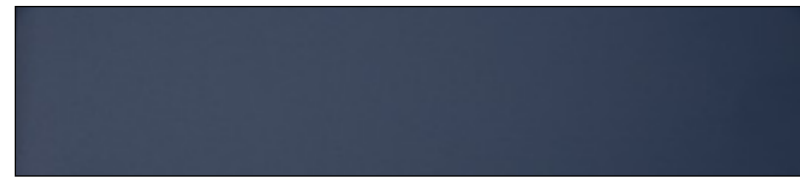
Vinaccia - F14/F34 (*)



Street - F15/F35 (*)



Ardesia - F16/F36 (*)



Night - F17/F37 (*)

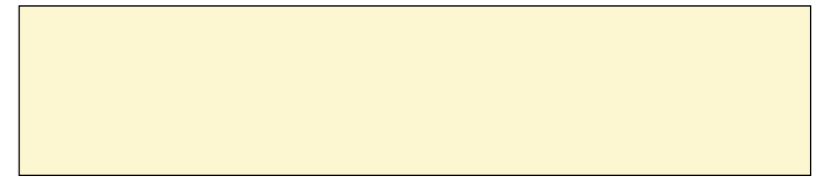


Nero - F08/F28 (*)

MODERNO - Laccati Lucidi/Opachi - Glossy/Matt Lacquered - - Price Group 6/5



Bianco - 14L/14O (*)



Corda - 15L/15O (*)



Rosso Andaluso - 22L/22O (*)



Prugna - 35L/35O (*)



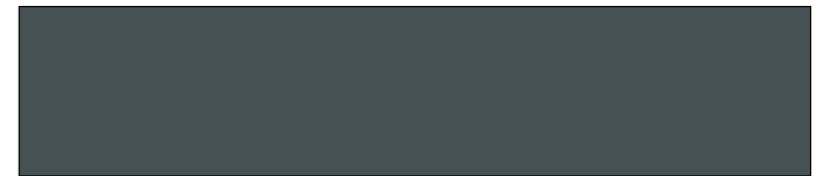
Grigio Cloud - 40L/40O (*)



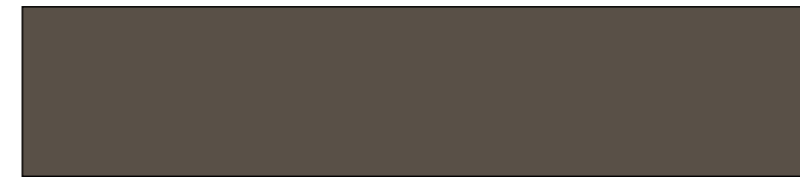
True Tortora - 41L/41O (*)



Nocciola Kaki - 42L/42O (*)



Ardesia - 48L/48O (*)



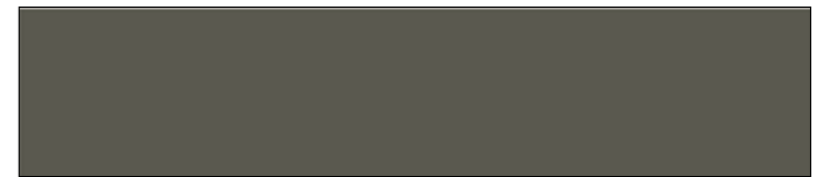
Fondente - 59L/59O (*)



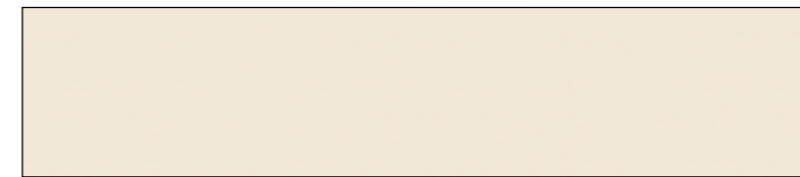
Bianco Ghiaccio - 66L/66O (*)



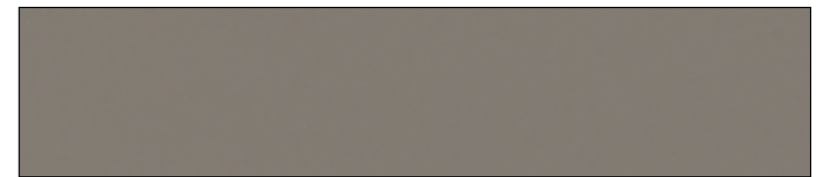
Atom Grey - 67L/67O (*)



Verde Grigio - 68L/68O (*)



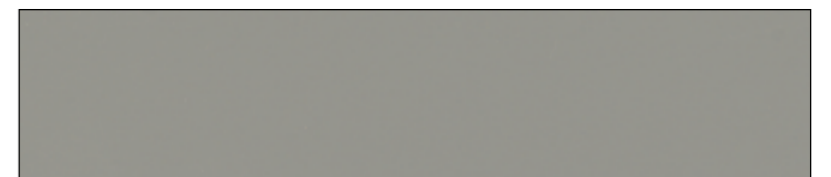
Bianco Neve - 69L/69O (*)



Amani - 71L/71O (*)



Grigio Scuro Porfido - 72L/72O (*)



Pomice - 73L/73O (*)

MODERNO - Laccati Lucidi/Opachi - Glossy/Matt Lacquered - Price Group 6/5



Street - 74L/74O (*)



Arenaria - 75L/75O (*)



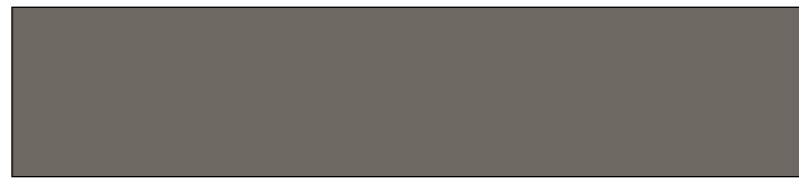
Grafite - 76L/76O (*)



Nero - 52L/52O (*)



Creta - 77L/77O (*)



City Grey - 78L/78O (*)



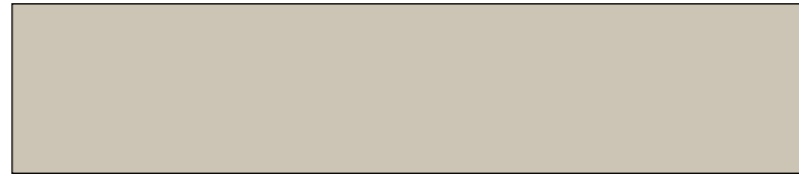
Moro - 79L/79O (*)



Absolute White - 80L/80O (*)

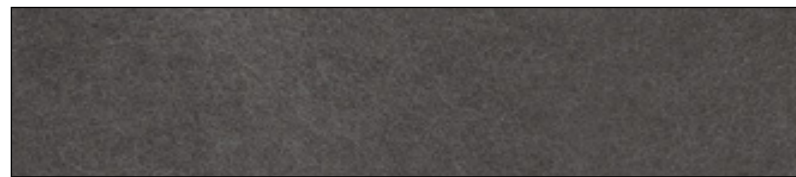


Biscuit - 81L/81O (*)

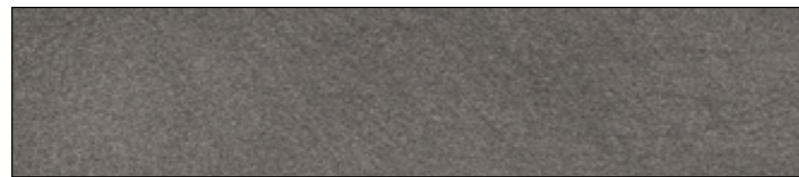


Grigio Luce - 82L/82O (*)

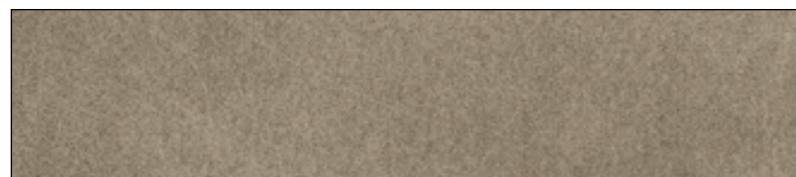
MODERNO - Laccati Effetto Metallo - Lacquered Metal Effect - Price Group 7



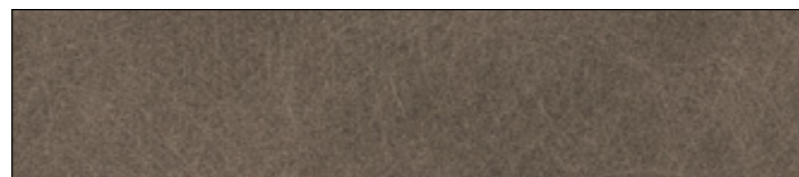
Metro Grey - 01E (*)



Boulevard Grey - 02E (*)



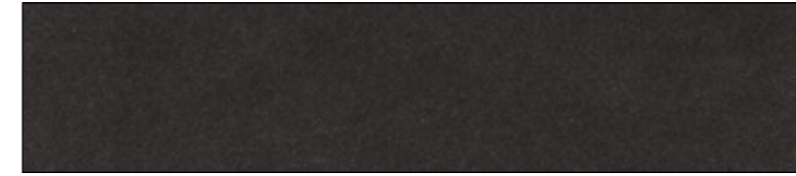
City Bronze - 03E (*)



Rail Bronze - 04E (*)

(*) Disponibili Anche Per Brera (vedi listino prezzi)

MODERNO - Laccati Effetto Metallo - Lacquered Metal Effect - Price Group 7



Iron Grey - 05E

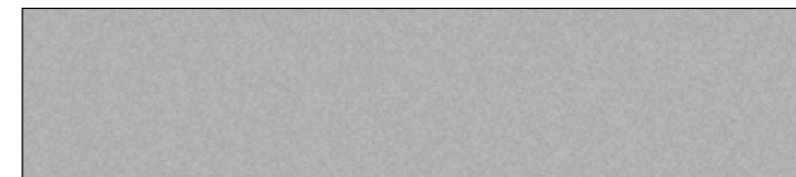


Rust - 06E

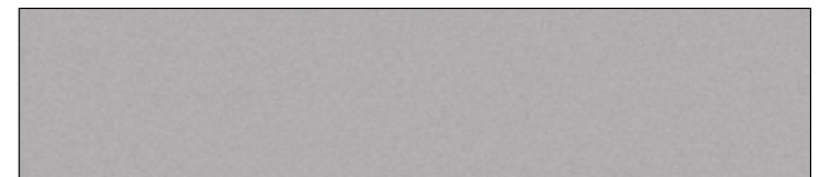


Brass - 07E

MODERNO - Laccati Metallizzati Lucido - Glossy Metallic Lacquered - Price Group 7



Grigio Flou - 40M



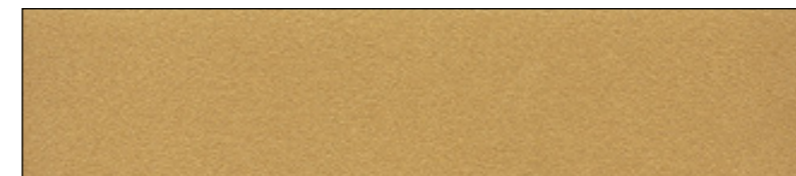
Primula Flou - 41M



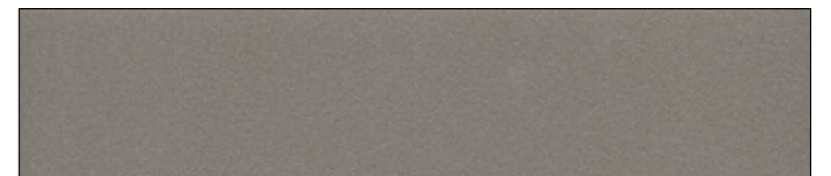
Nero Flou - 42M



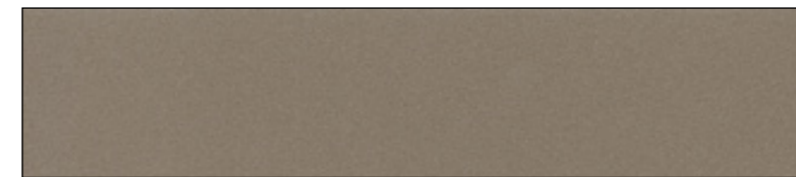
Bianco Flou - 47M



Gold Flou - 49M



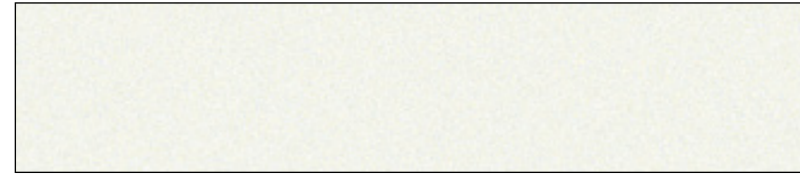
Fumo di Londra Flou 50M



Amani Flou - 71M

(*) Disponibili Anche Per Brera (vedi listino prezzi)

MODERNO - Laccati Metallizzati Opaco - Matt Metallic Lacquered - Price Group 7



Bianco Perla - 61M



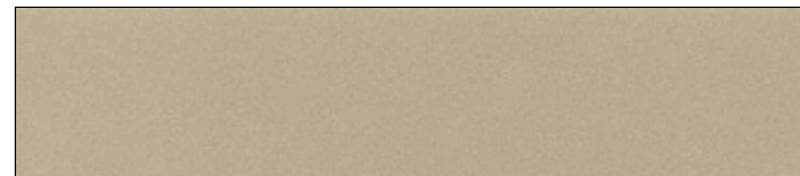
Argento - 62M



Fumo di Londra - 64M



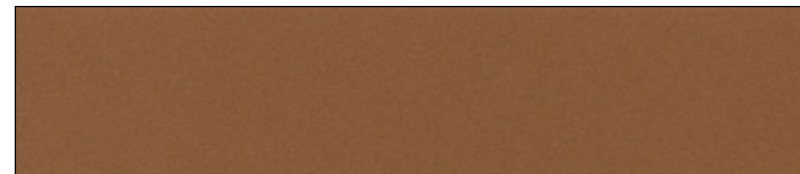
Aura Flou - 66M



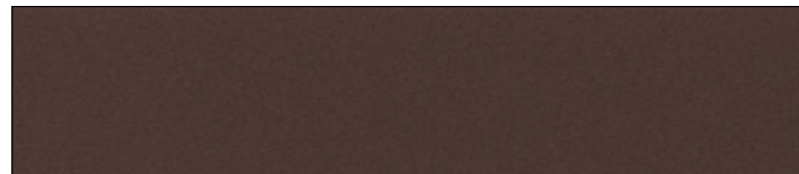
Avorio Flou - 67M



Anvil Flou - 68M

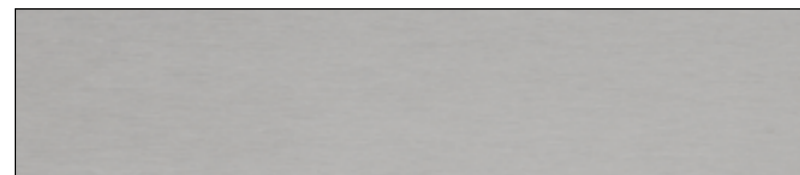


Rame Flou - 69M

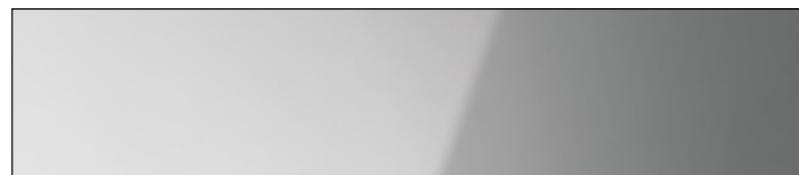


Marrone Flou - 70M

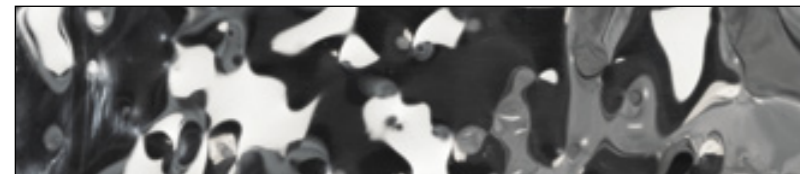
Moderno - Acciai - Stanley Steel



Acciaio Satinato - AC1 - Price Group 11



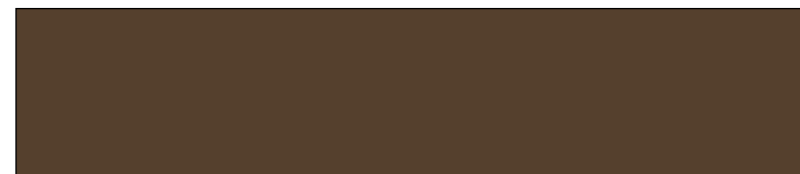
Acciaio Lucido - AC2 - Price Group 12



Acciaio Martellato - AC3 - Price Group 13



Rame Alma - AC0 - Price Group 16



Petrol Bronze Opaco - AC9 - Price Group 16

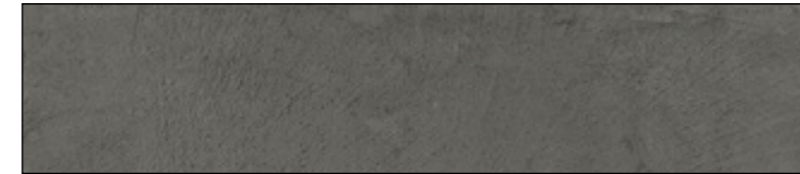
MODERNO - Cementi - Cements - Price Group 7



Cemento Grigio - CE1



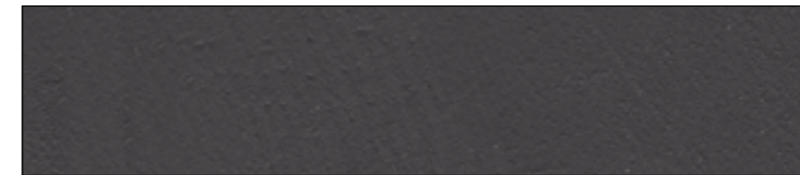
Cemento Tortora - CE2



Cemento Antracite - CE3



Cemento Bianco - CE4

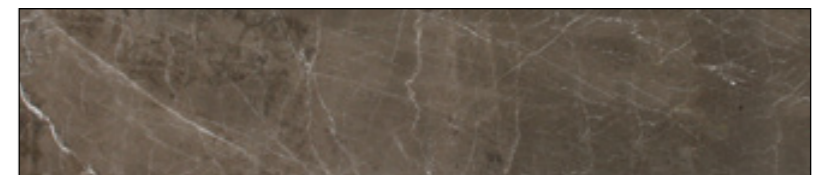


Cemento Nero - CE5

MODERNO - Pietre - Stones



Silvia Oro Anticato - M50 - Price Group 23



Brown Stone Lether - M51 - Price Group 24

MODERNO - Pietre - Stones



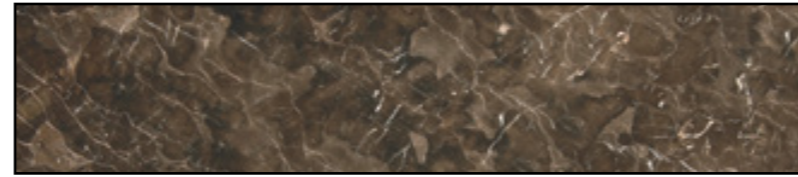
Grey Stone Leather - M52 - Price Group 24



Marmo Carrara - M54/M53 - Price Group 23



Marmo Calacatta Gold - M56/M55 - Price Group 25



Mistic Brown - M58/M57 - Price Group 24



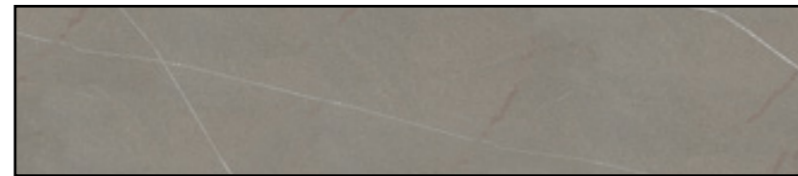
Hematite Black Leather (v.o.) - M61 - Price Group 25



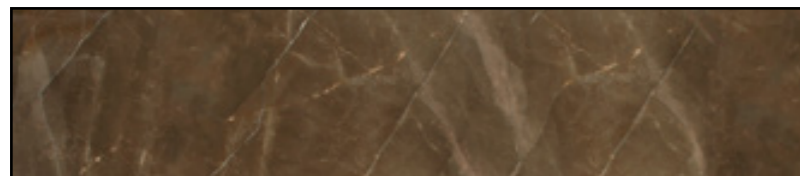
Travertino Navona (v.o.) - M63/M62 - Price Group 24



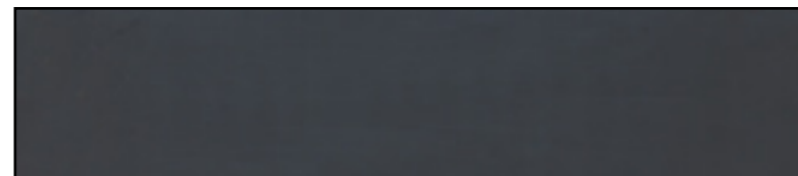
Travertino Silver (v.o.) - M65/M64 - Price Group 24



Piasentina Leather - M66 - Price Group 26



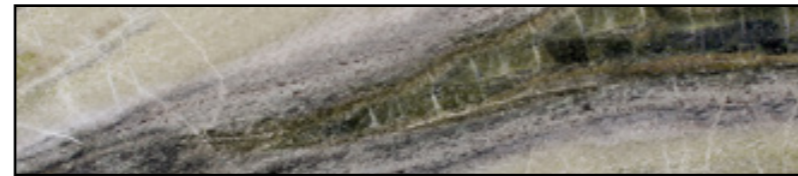
Bronze Amani Lucido - M67 - Price Group 25



Lavagna Levigata Opaca - LV1 - Price Group 23



Silver Brown Wave Lucido - M69 - Price Group 25



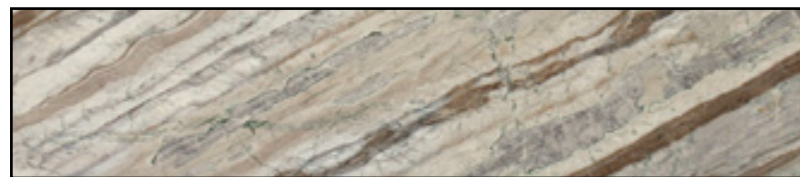
Irish Green Lucido (v.o.) - M70 - Price Group 25



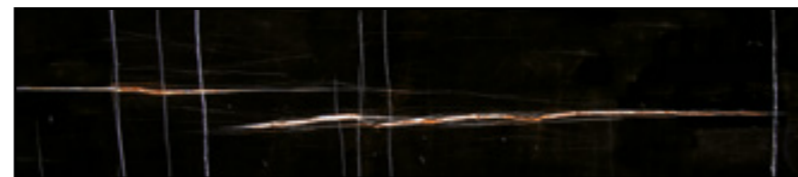
Statuario Venato Lucido - M71 - Price Group 26



Stone Wood Lucido - M72 - Price Group 25



Cortecchia Lucido (v.o.) - M73 - Price Group 24



Sahara Noir Lucido (v.o.) - M74 - Price Group 24

MODERNO - Essenze - Wood Finishes - Price Group 6/8



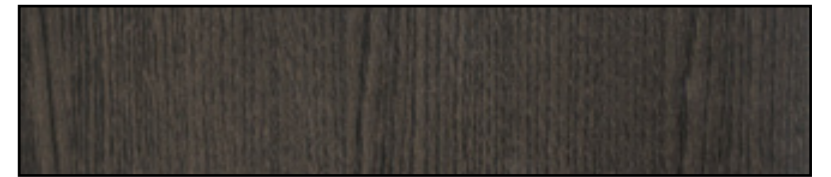
Rovere Tattile Grigio Cashmere (v.v.) - W50/W40



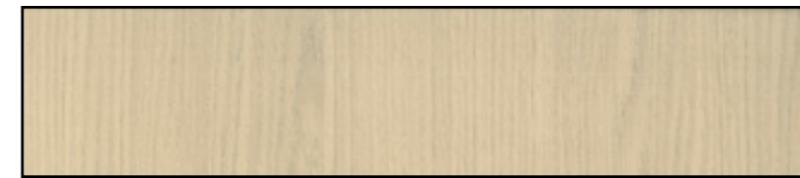
Rovere Tattile Sigaro (v.v.) - W54/W44



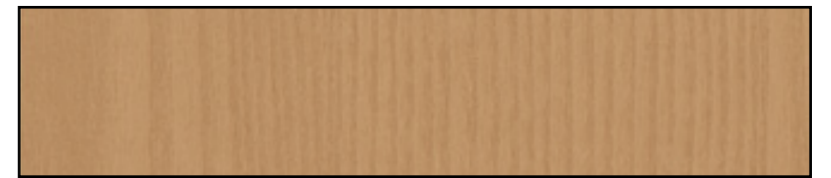
Rovere Tattile Siena (v.v.) - W52/W42



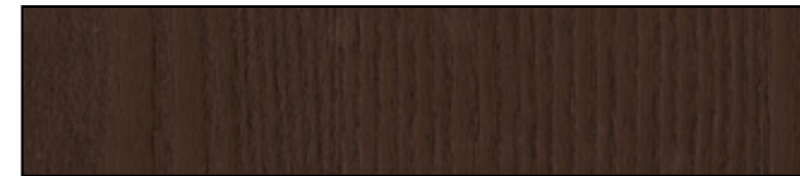
Rovere Tattile Carbone (v.v.) - W51/W41



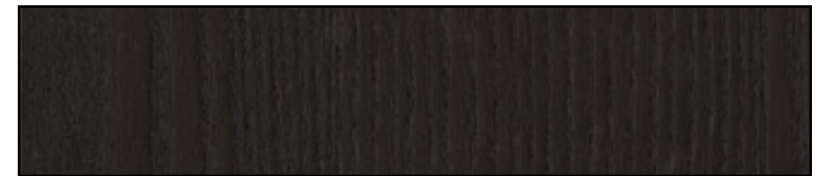
Rovere Tattile Sbiancato (v.v.) - W55/W45



Rovere Tattile Naturale (v.v.) - W56/W46



Rovere Tattile Caffè (v.v.) - W57/W47



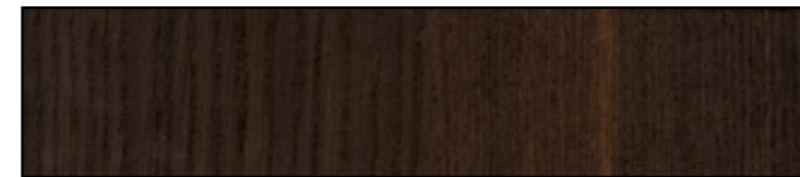
Rovere Tattile Nero (v.v.) - W58/W48



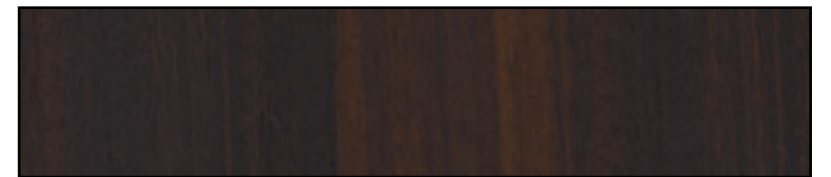
Rovere Tattile Calce (v.v.) - W59



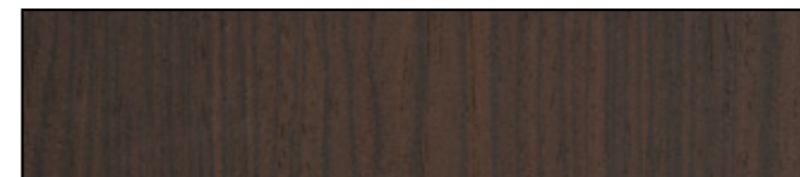
Rovere Tattile Grigio Lapis (v.v.) - W30/W20



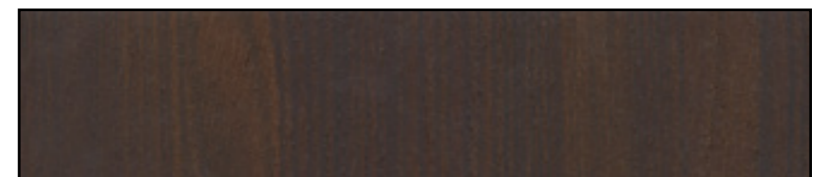
Rovere Termotrattato Opaco (v.v.) - E65 - Price Group 7



Eucalipto Termotrattato (v.v.) - EB1/ED1 - Price Group 7/9

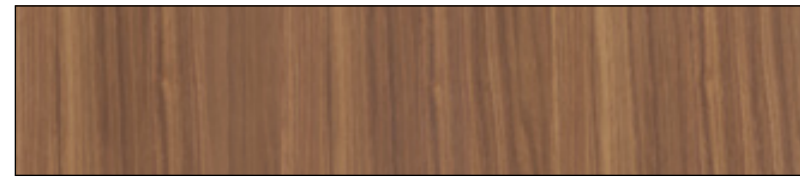


Rovere Termotrattato Blend (v.v.) - EB5/ED5 - P.G.7/9

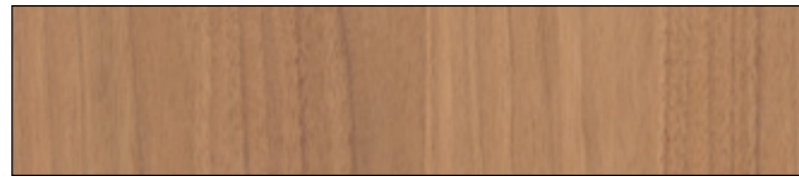


Rovere Termotrattato Medok (v.v.) - EB6/ED6 - P.G. 7/9

MODERNO - Essenze - Wood Finishes



Canaletto True (v.v.) - EB8/ED8 - Price Group 6/8



Noce Blade (v.v.) - EF5/EG5 - Price Group 7/9



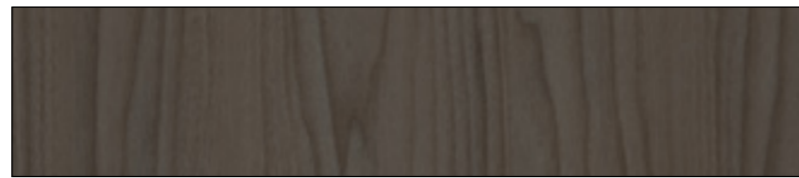
Olmo Naturale - E60/E66 - Price Group 7/9



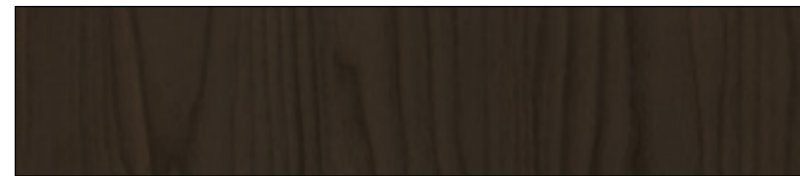
Olmo Lava - EB2/ED2 - Price Group 7/9



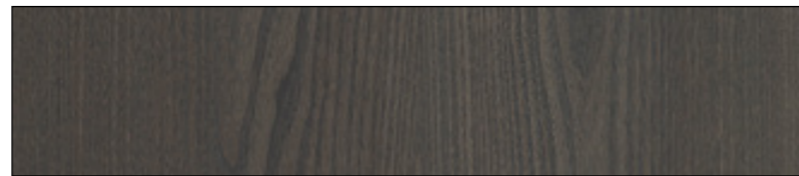
Olmo Bisque (v.v.) - EE7 - Price Group 7



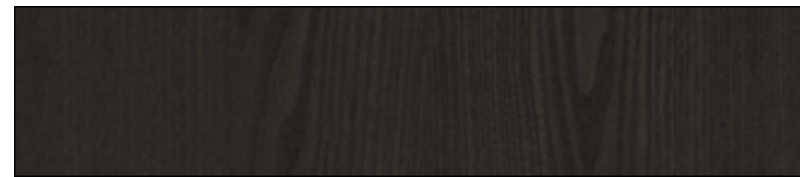
Olmo Grigio (v.v.) - EE8/EF8 - Price Group 7/9



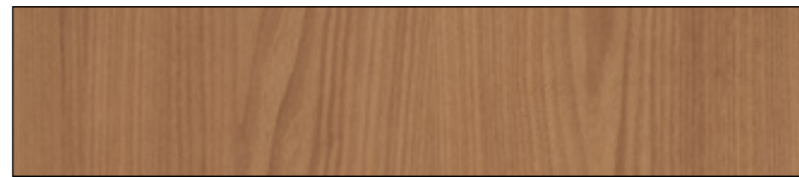
Olmo Brown (v.v.) - EE9/EF9 - Price Group 7/9



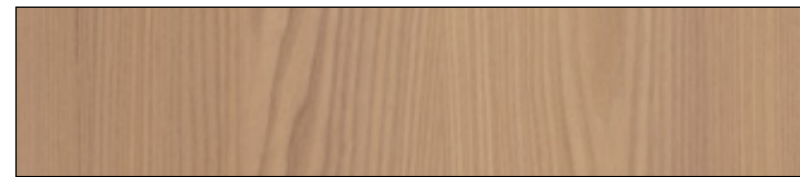
Olmo Grigio Cenere (v.v.) - EF1 - Price Group 7 (*)



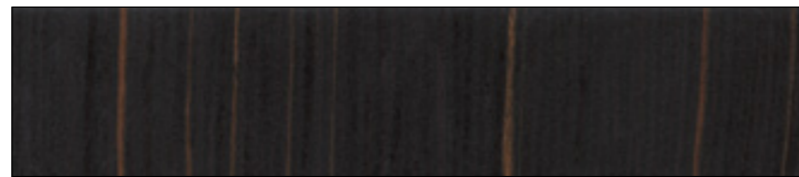
Olmo Nero (v.v.) - EF2 - Price Group 7 (*)



Olmo Noce (v.v.) - EF3 - Price Group 7 (*)



Olmo Crudo (v.v.) - EF4 - Price Group 7 (*)



Ebanò Soft (v.v.) - EA4/EC4 - Price Group 7/9



Legno Rovere Raw Opaco (v.v.) - E64 - Price Group 6



Rovere Nodato Opaco (v.v.) - E90 - Price Group 6 (**)

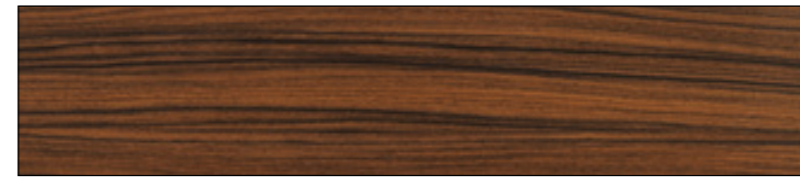
MODERNO - Essenze Exclusive - Exclusive Wood Finishes



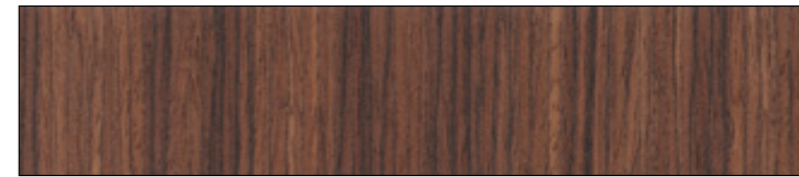
Ebanò Naturale - E05/E04 - Price Group 6/8



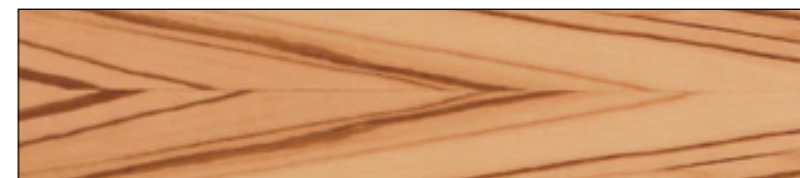
Ebanò Grigio - E07/E06 - Price Group 6/8



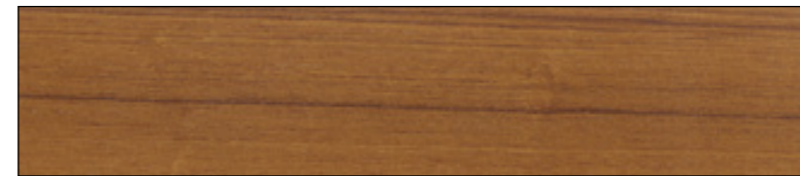
Palissandro Santos - EA2/EC2 - Price Group 7/9



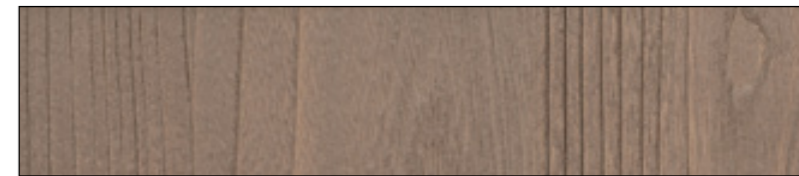
Palissandro Rigato (v.v.) - EA3/EC3 - Price Group 7/9



Ulivo - E20/E19 - Price Group 12/13



True Teak - EA1/EC1 - Price Group 12/13



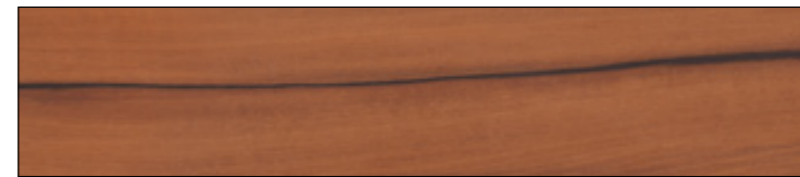
Teak Sabbiato Terra Opaco (v.v.) - E92 - Price Group 12



Teak Sabbiato Nero Lava Opaco (v.v.) - E91 - P.G. 12



Teak Sabbiato Cotone Opaco (v.v.) - E93 - P.G. 12



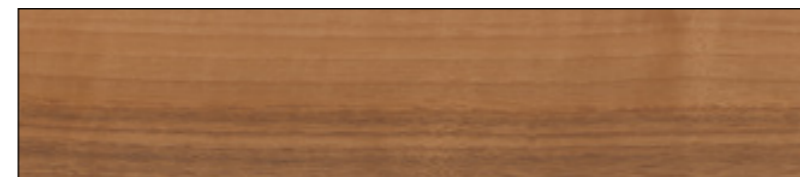
Tineo Naturale - E51/E50 - Price Group 12/13



Tessuto Pitone (v.v.) - EB9/ED9 - Price Group 7/9



Sucupira - EB3/ED3 - Price Group 7/9



Noce Origin - E63/E69 - Price Group 7/9



Noce Origin Naturale - EB7/ED7 - Price Group 7/9

MODERNO - Essenze Exclusive - Exclusive Wood Finishes



Sicomoro Ivory (v.v.) - E76/E77 - with supplement



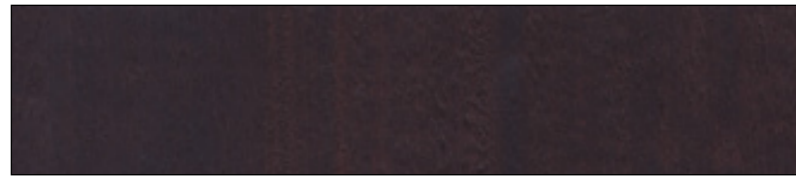
Sicomoro Perla (v.v.) - EA8/EC8 - Price Group 12/13



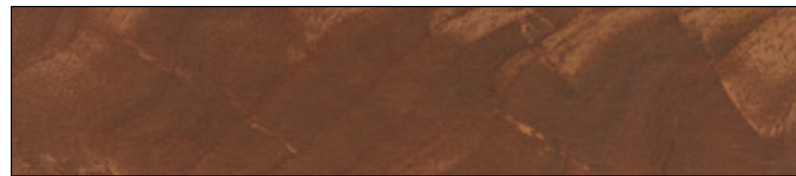
Sicomoro Argento (v.v.) - EA7/EC7 - Price Group 12/13



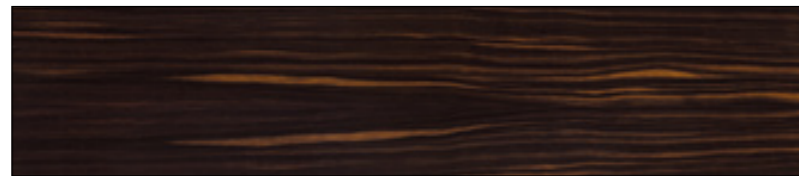
Sicomoro Torba (v.v.) - EA6/EC6 - Price Group 12/13



Sicomoro Velvet (v.v.) - EA9/EC9v - Price Group 7/9



Piuma Di Mogano (v.v.) - E72/E73 - with supplement



Ebano Macassar - E70/E71 - with supplement



Radica Di Tamo (v.v.) - E74/E75 - with supplement

MODERNO - Foglia - Leaf - Price Group 12



Oro Foglia Senza Disegno - E25/E29



Argento Foglia Senza Disegno - E27/E31

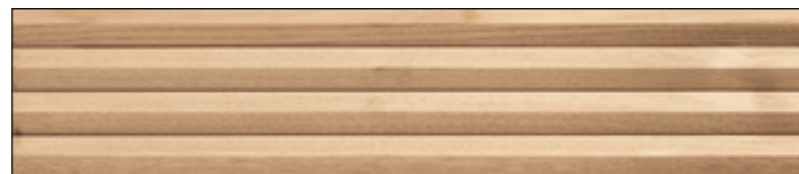


Oro Rosa Senza Disegno - EE5/EE6

MODERNO - Essenze Exlusive Solutions - Exlusive Solutions Wood Finishes



Legno Castagno Raw Opaco (v.v.) - MA1 - Price Group 13



Legno Castagno "V" Opaco - MCV - Price Group 13

FACTORY - Legni - Woods



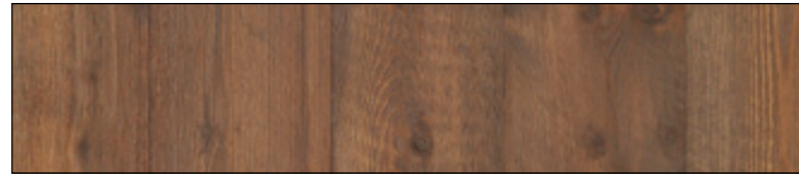
Retrivo - E80/E85 - Price Group 14/18



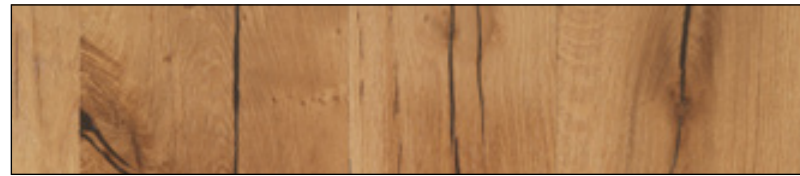
Senior Brown - E81/E86 - Price Group 14/18



Arcaico - E82/E87 - Price Group 12/14

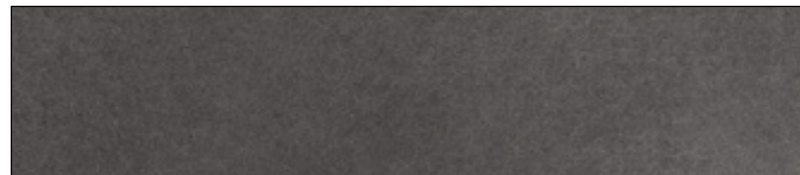


Dust Brown - E83/E88 - Price Group 12/14

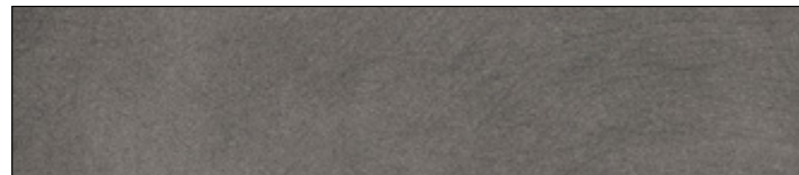


Rovere Antico - E84/E89 - Price Group 13/14

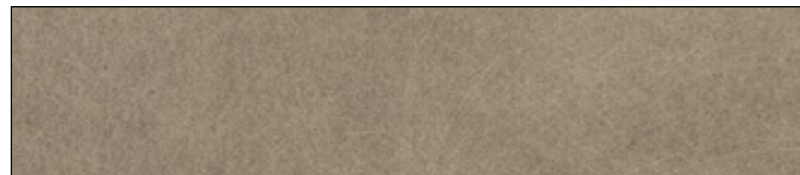
FACTORY - Laccati Effetto Metallo - Lacquered Metal Effect - Price Group 7



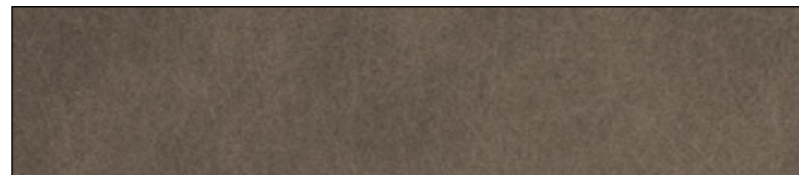
Metro Grey - 01E



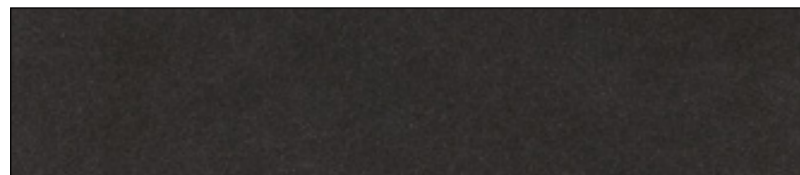
Boulevard Grey - 02E



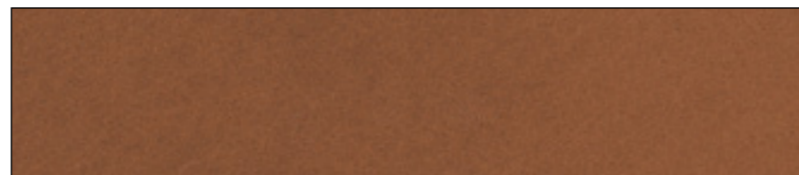
City Bronze - 03E



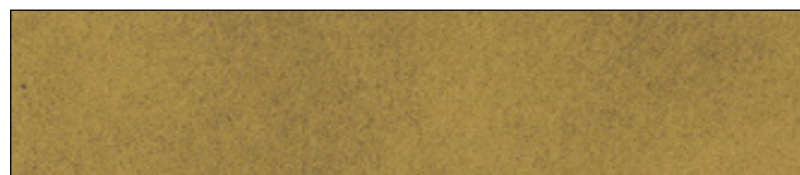
Rail Bronze - 04E



Iron Grey - 05E



Rust - 06E



Brass - 07E

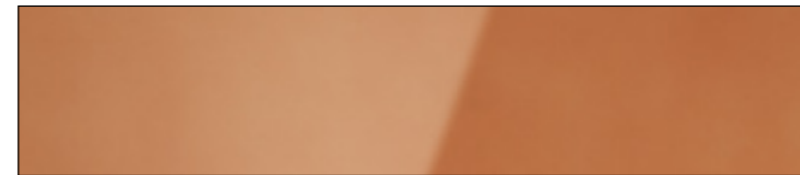
FACTORY - Metalli - Metals



Acciaio Lucido - AC2 - Price Group 12



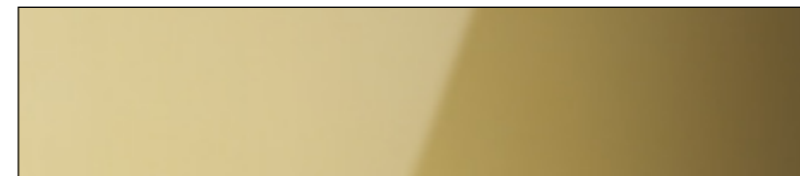
Acciaio Satinato/Spazzolato - AC1 - Price Group 11



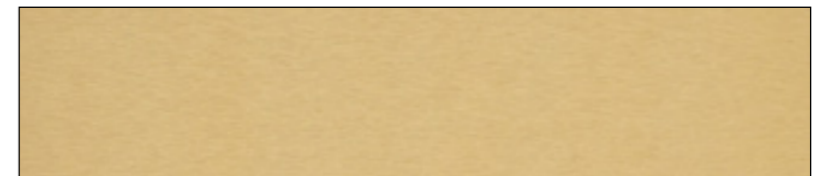
Finitura Rame Lucido - LA2 - Price Group 16



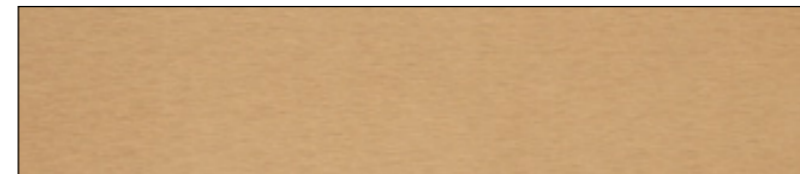
Finitura Rame Spazzolato - LA7 - Price Group 16



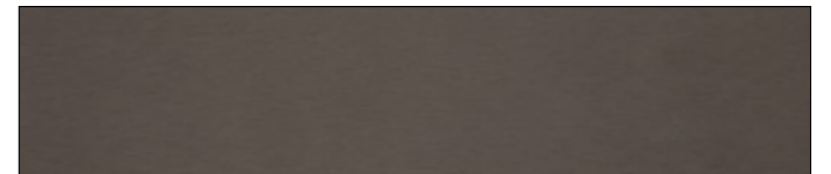
Finitura Ottone Lucido - LA3 - Price Group 16



Finitura Ottone Spazzolato - LA6 - Price Group 16



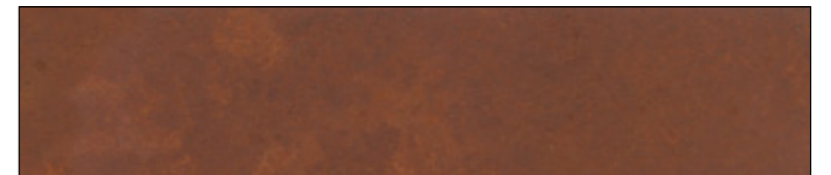
Finitura Satinato Gold - LA4 - Price Group 16



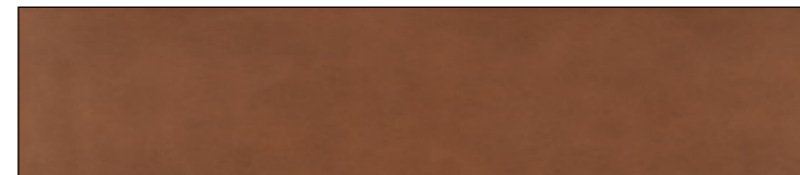
Finitura Bronw Bronze - LA5 - Price Group 16



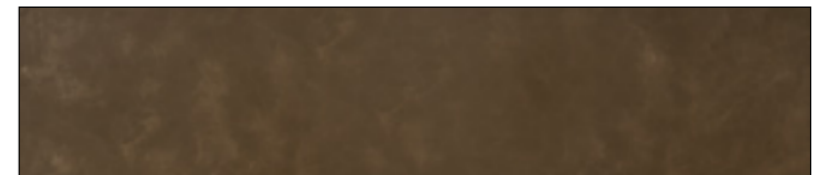
Finitura Gun Metal - LS1 - Price Group 13



Finitura Corten Officina - LS2 - Price Group 15



Finitura Rame Anticato Officina - LS3 - Price Group 16

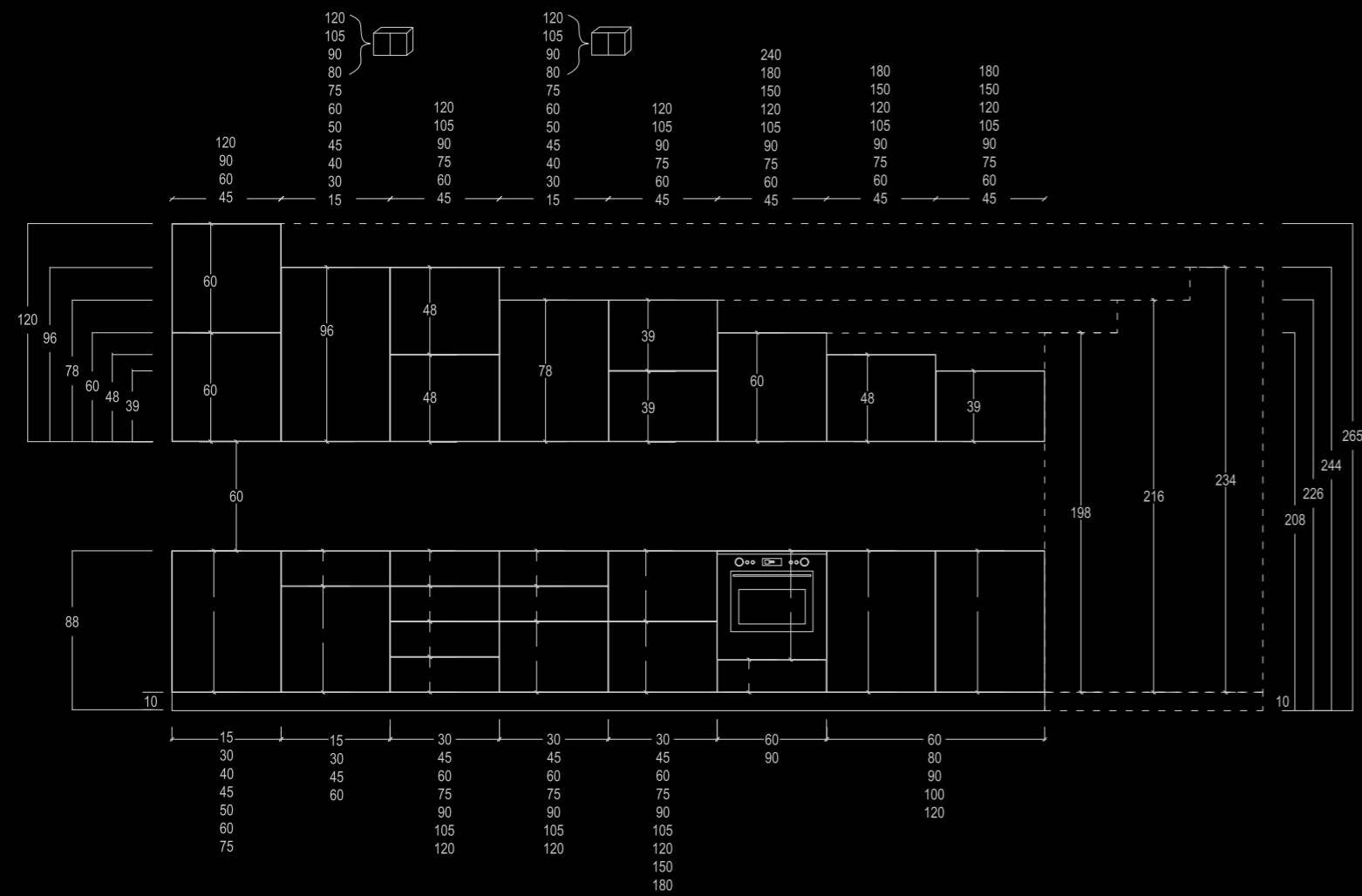


Finitura Ottone Brunito Officina - LS4 - Price Group 16

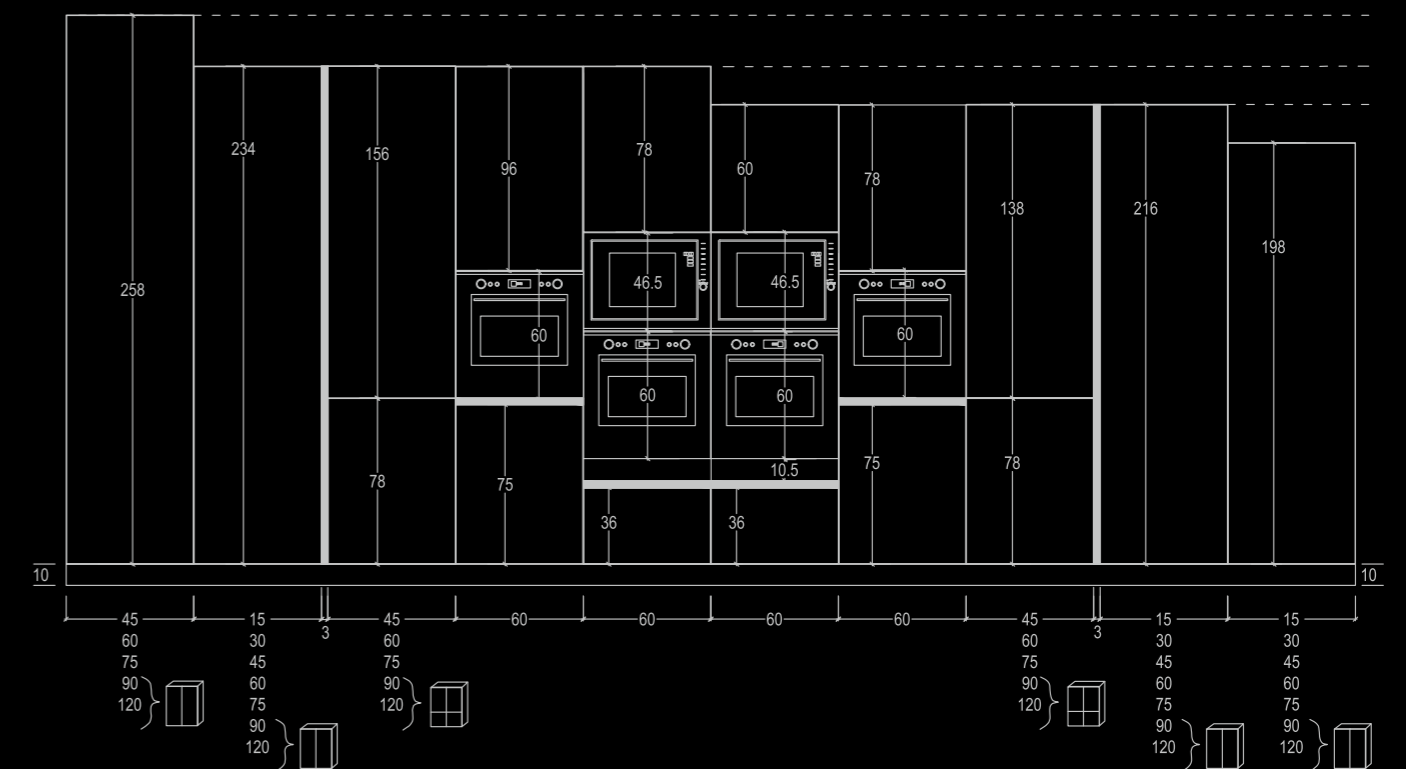
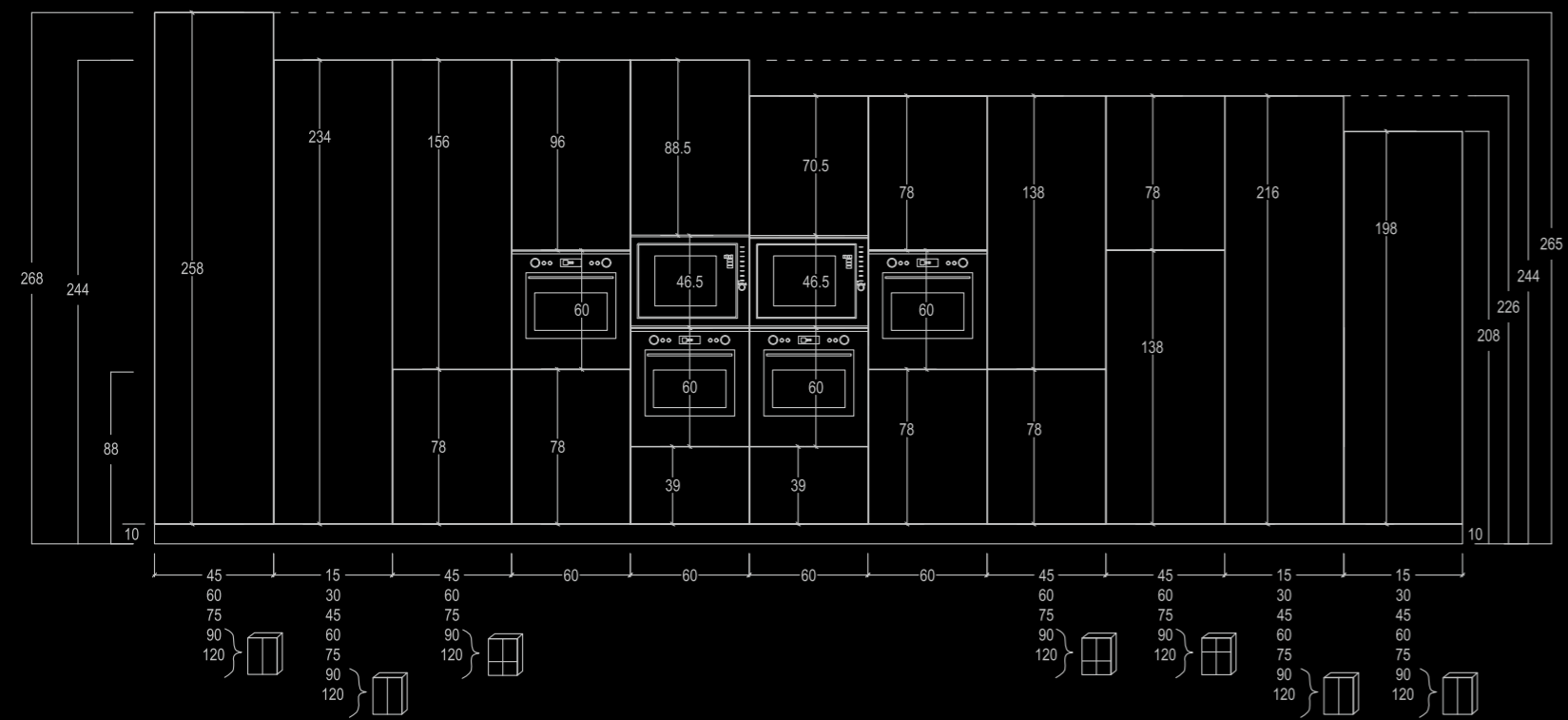
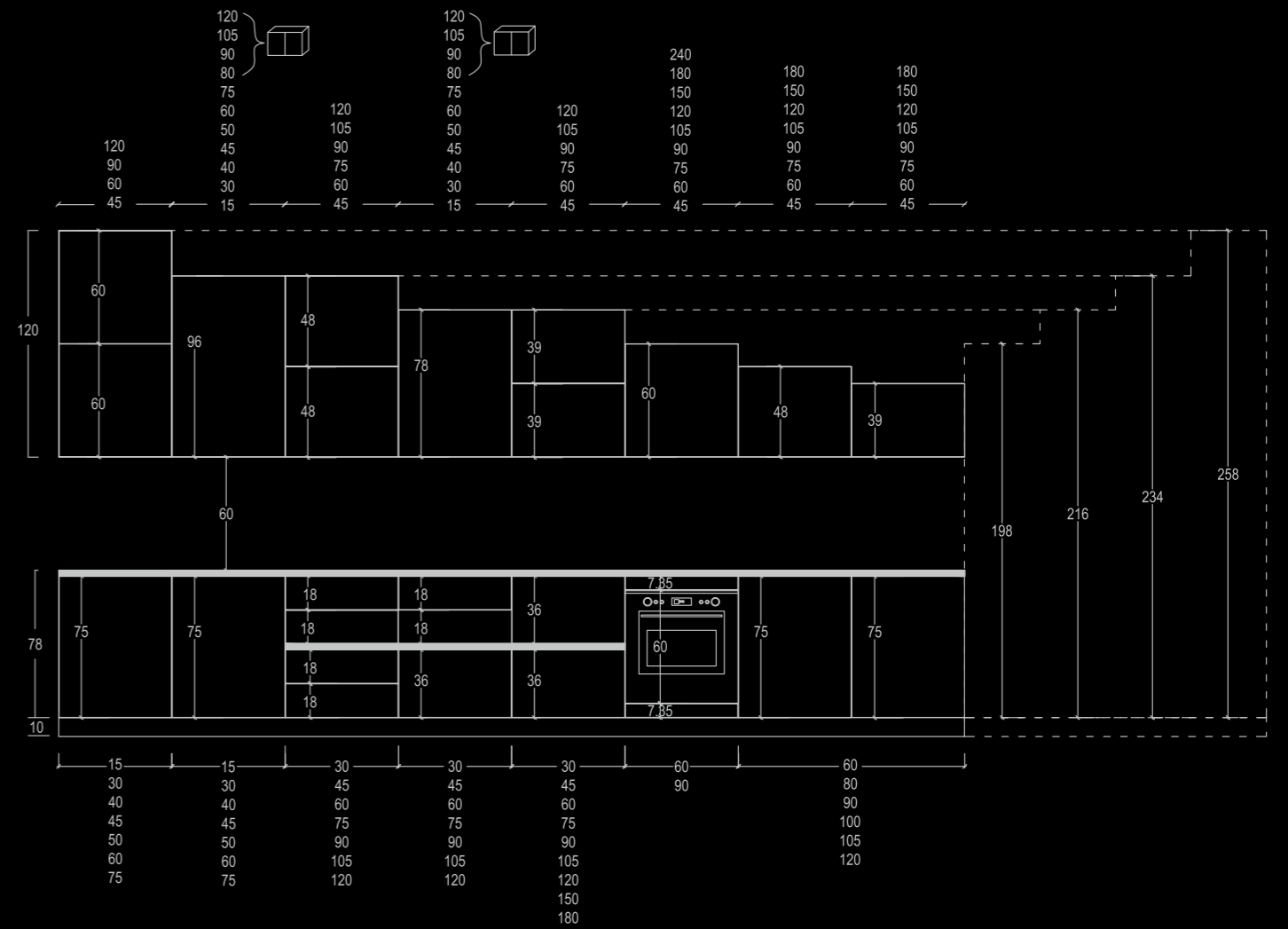


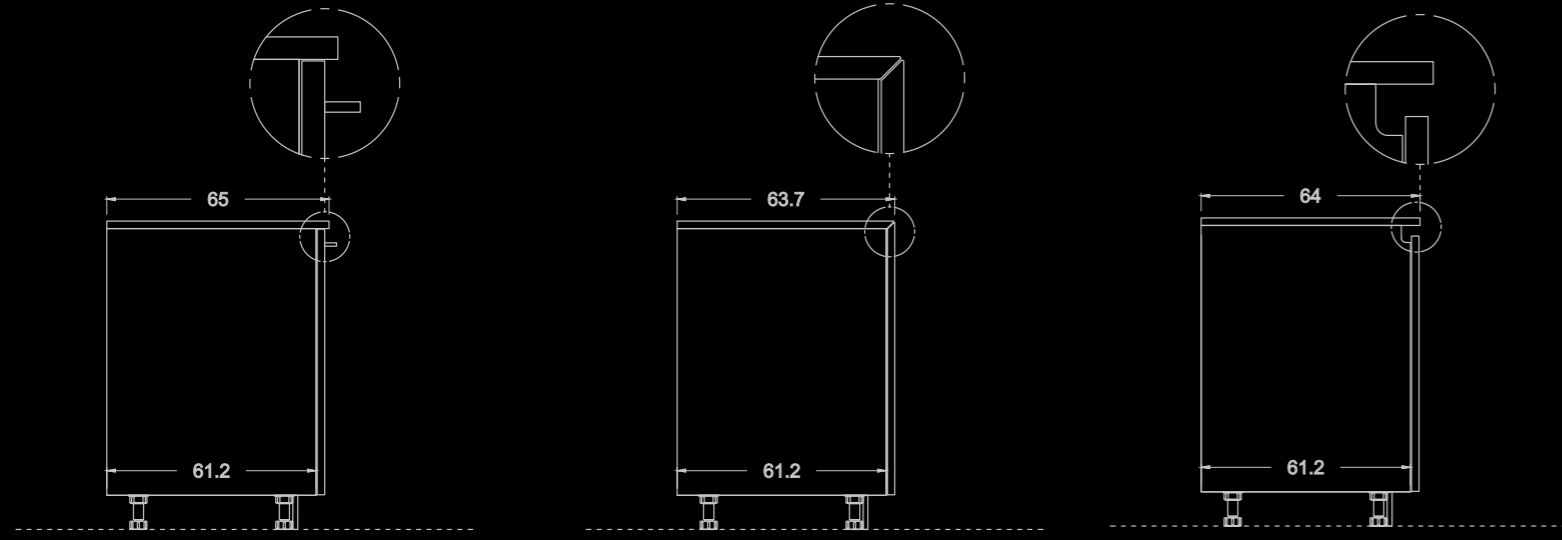
Finitura Aged Steel Officina - LS5 - Price Group 15

MODULARITA' - Ante h.78



MODULARITA' - Ante h.78 con gola

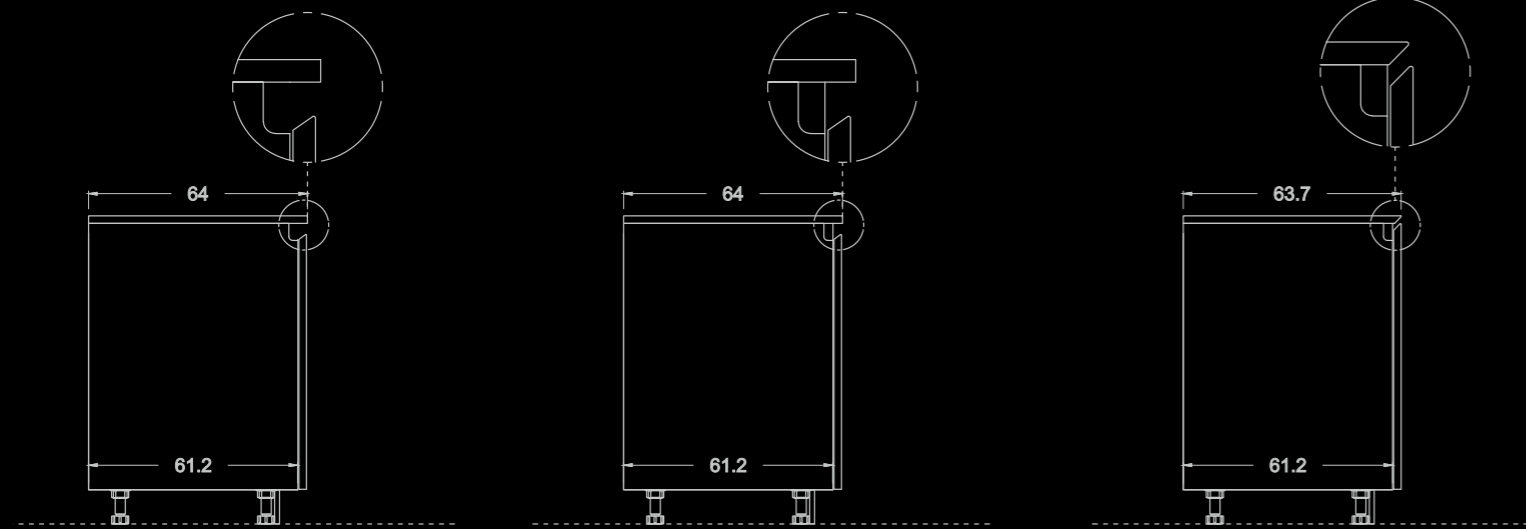
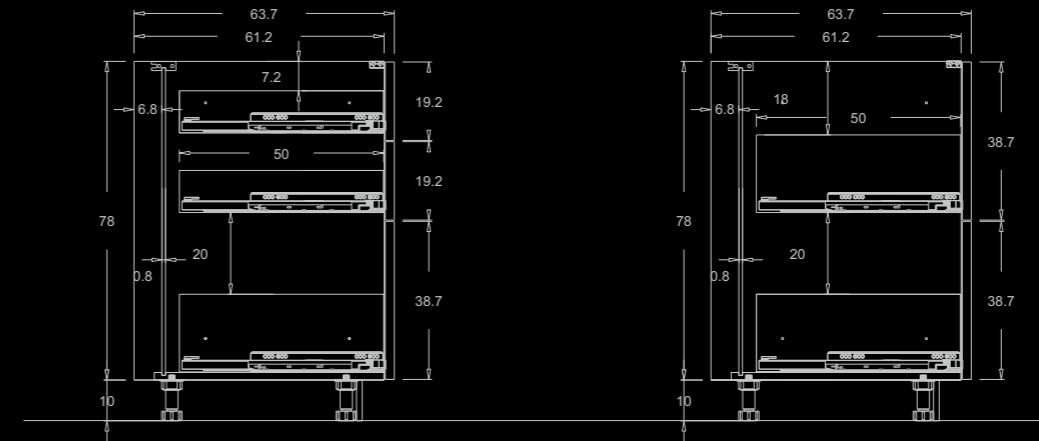
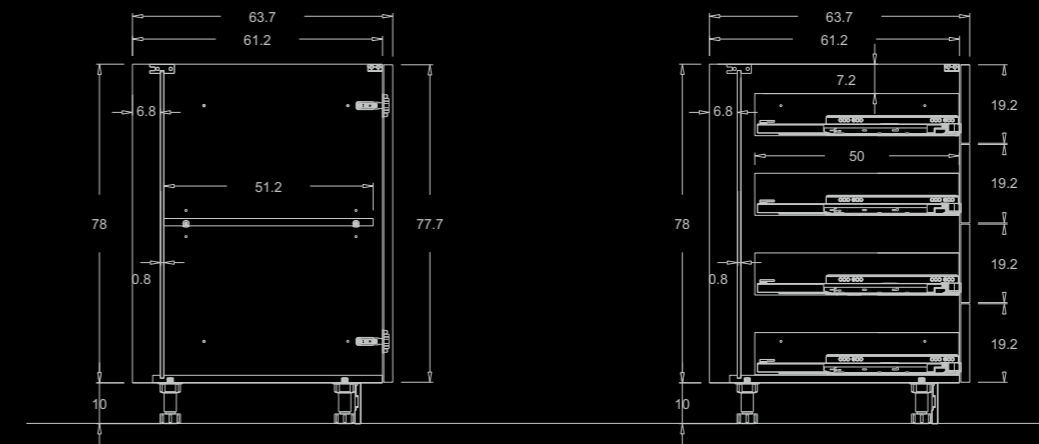




Maniglia

45° Filo Top "Contemporà"

Gola C - Channel



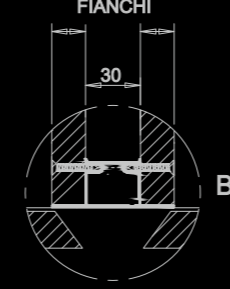
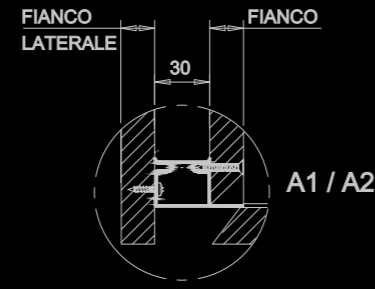
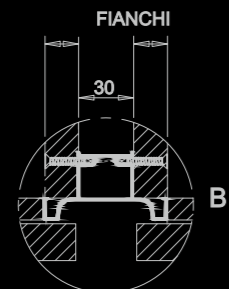
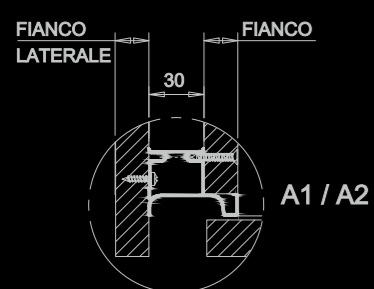
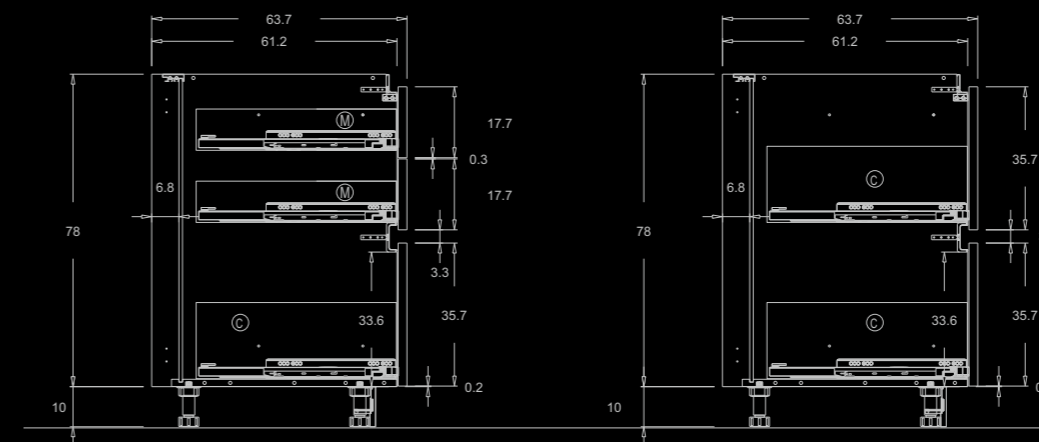
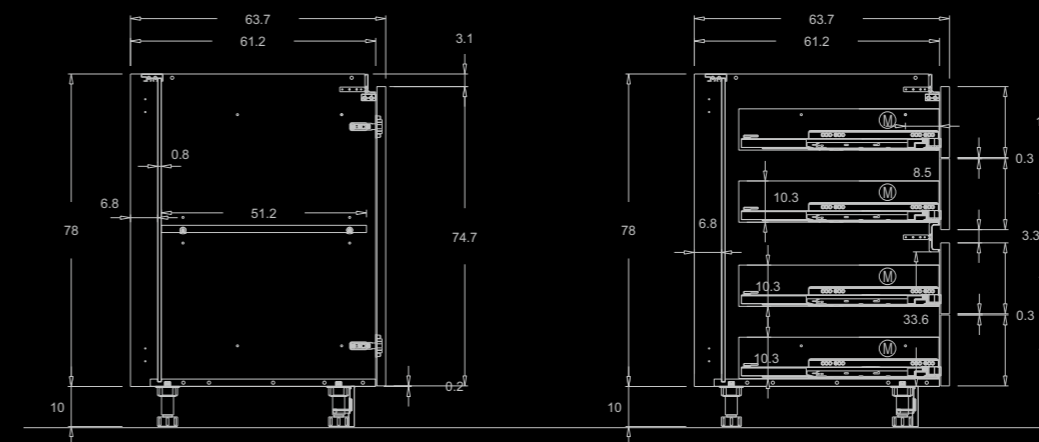
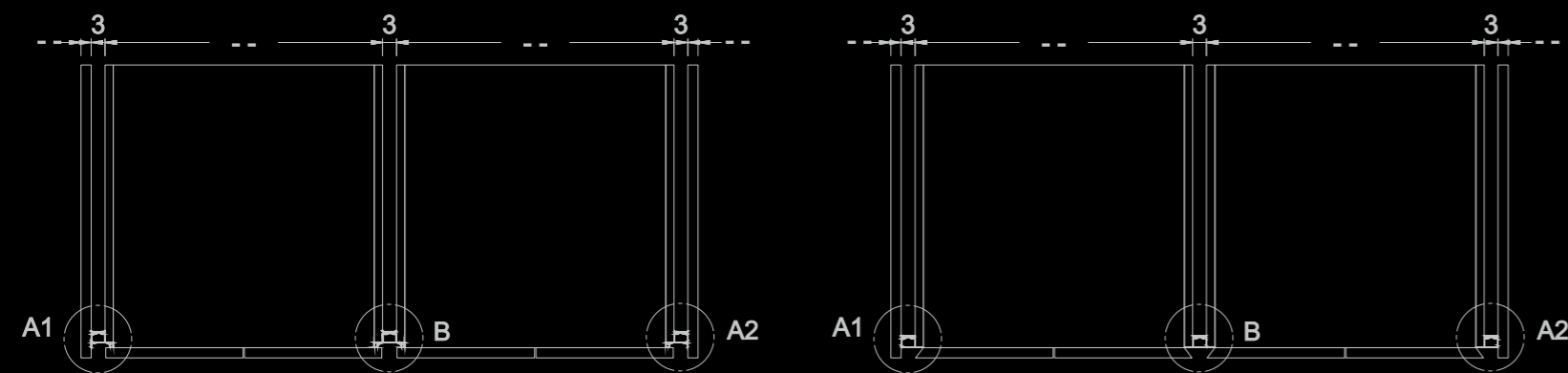
Gola C - Channel 35°

Gola Flat Channel 35°

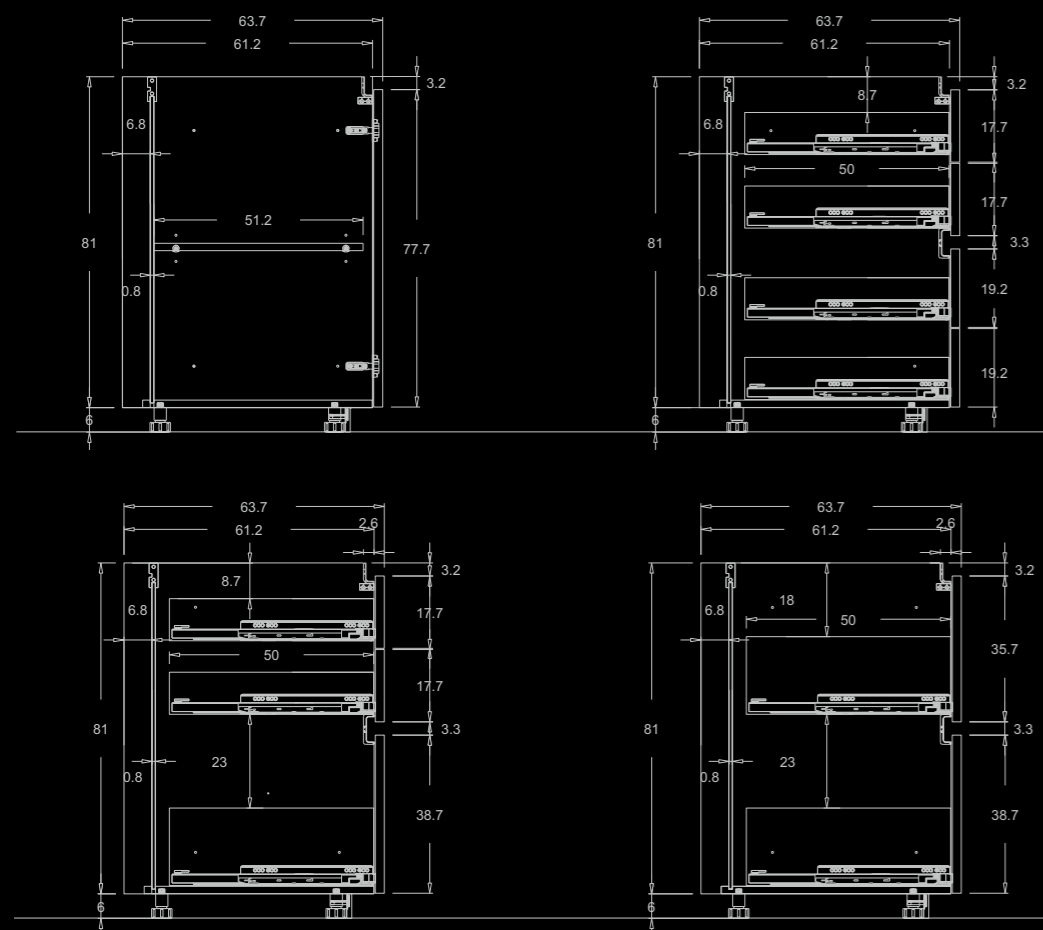
Gola Flat - Channel 45°

MODULARITA' - Sezioni Basi h 78 con gola

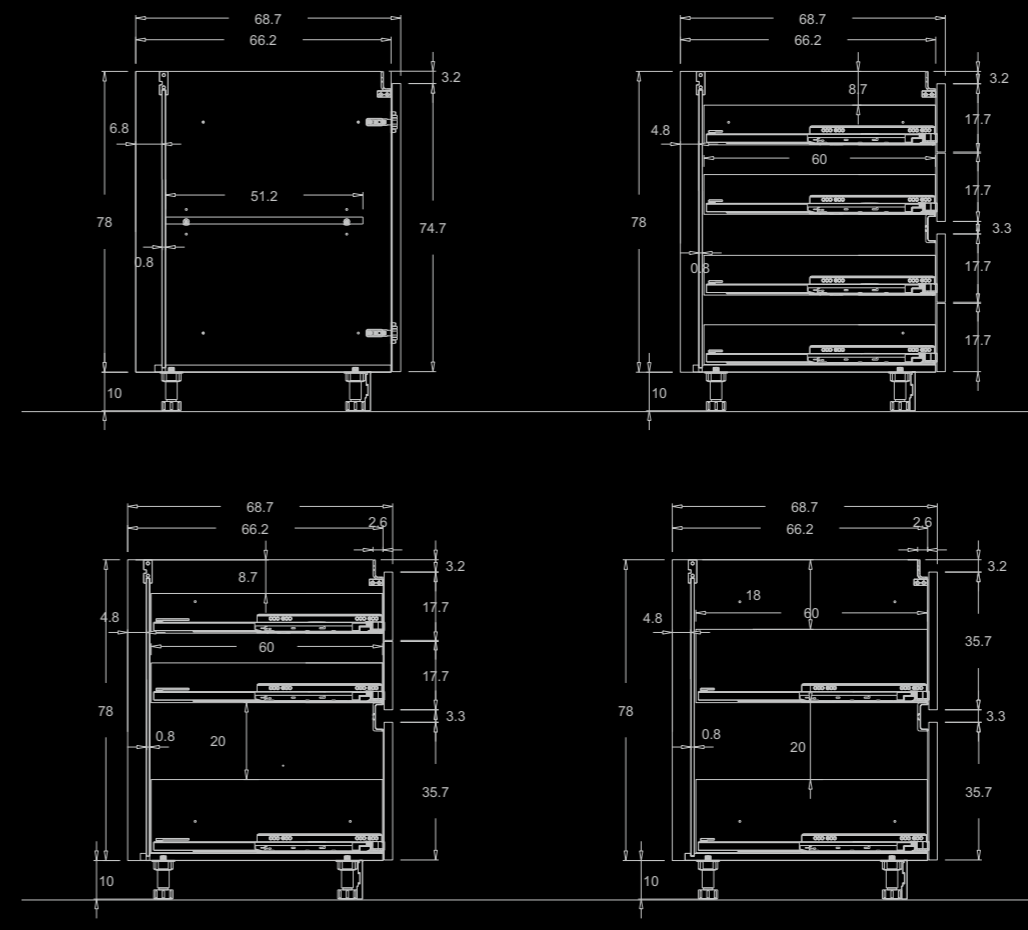
MODULARITA' - Gola Verticale



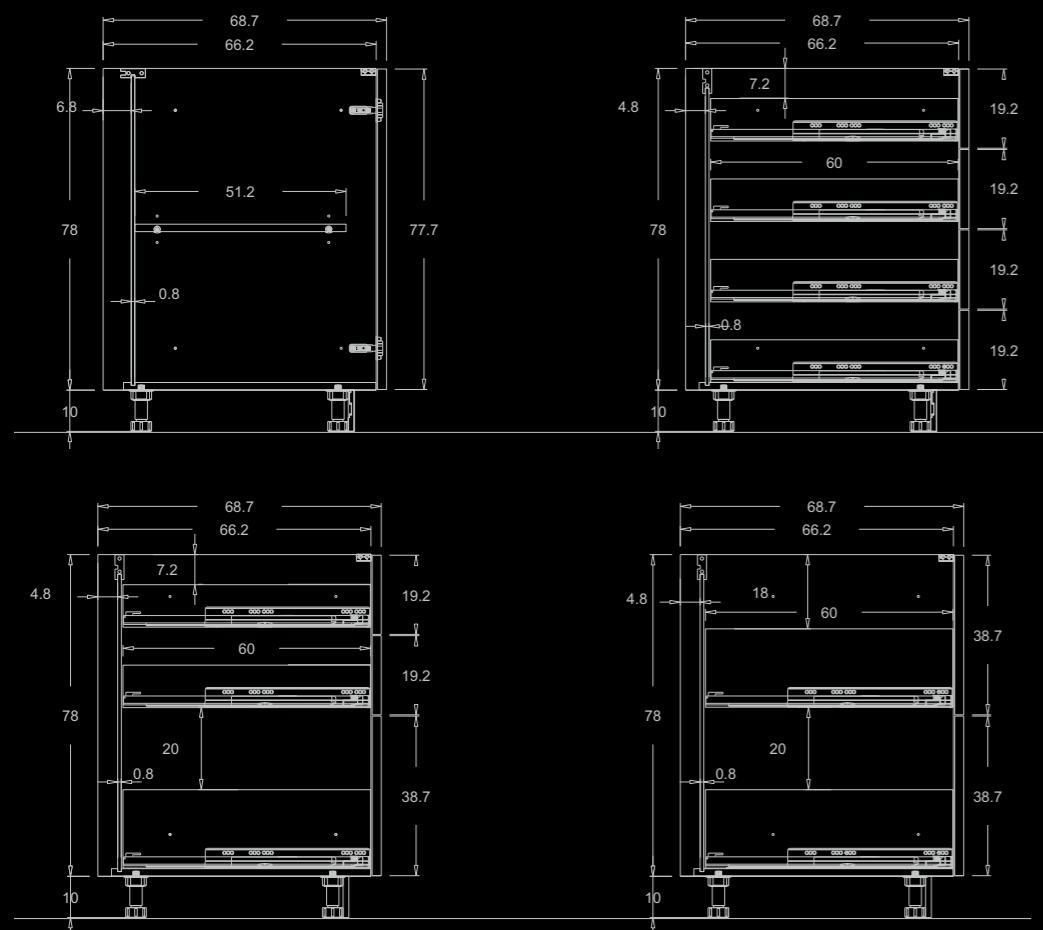
MODULARITA' - Sezioni Basi h 81



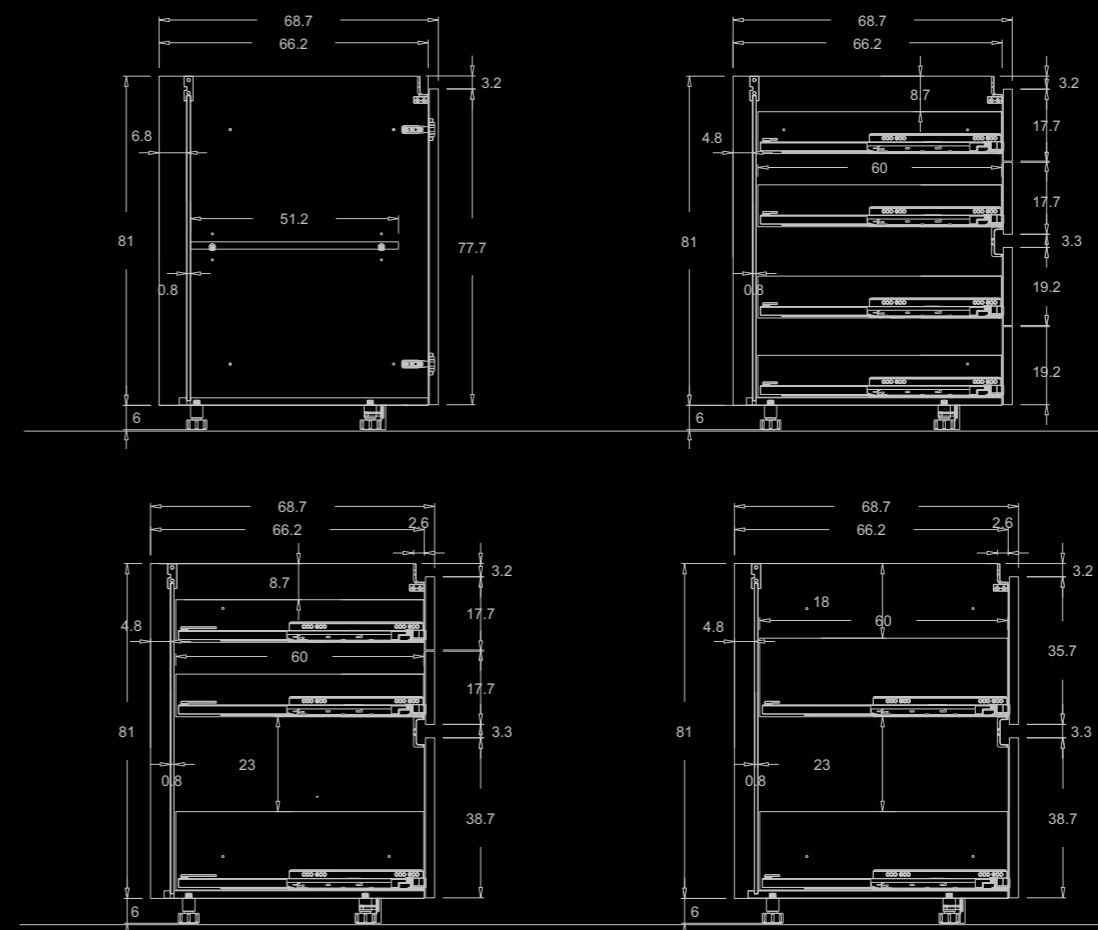
MODULARITA' - Sezioni Basi Maxi h 78 con gola



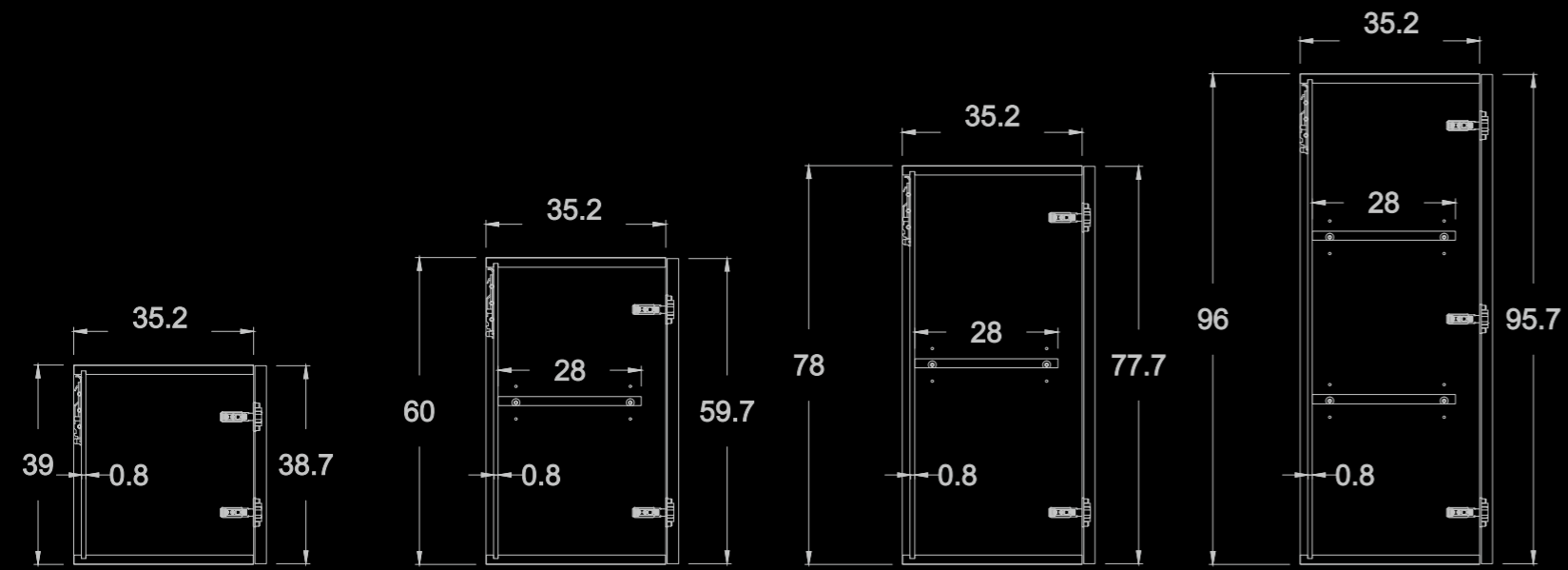
MODULARITA' - Sezioni Basi maxi h 78



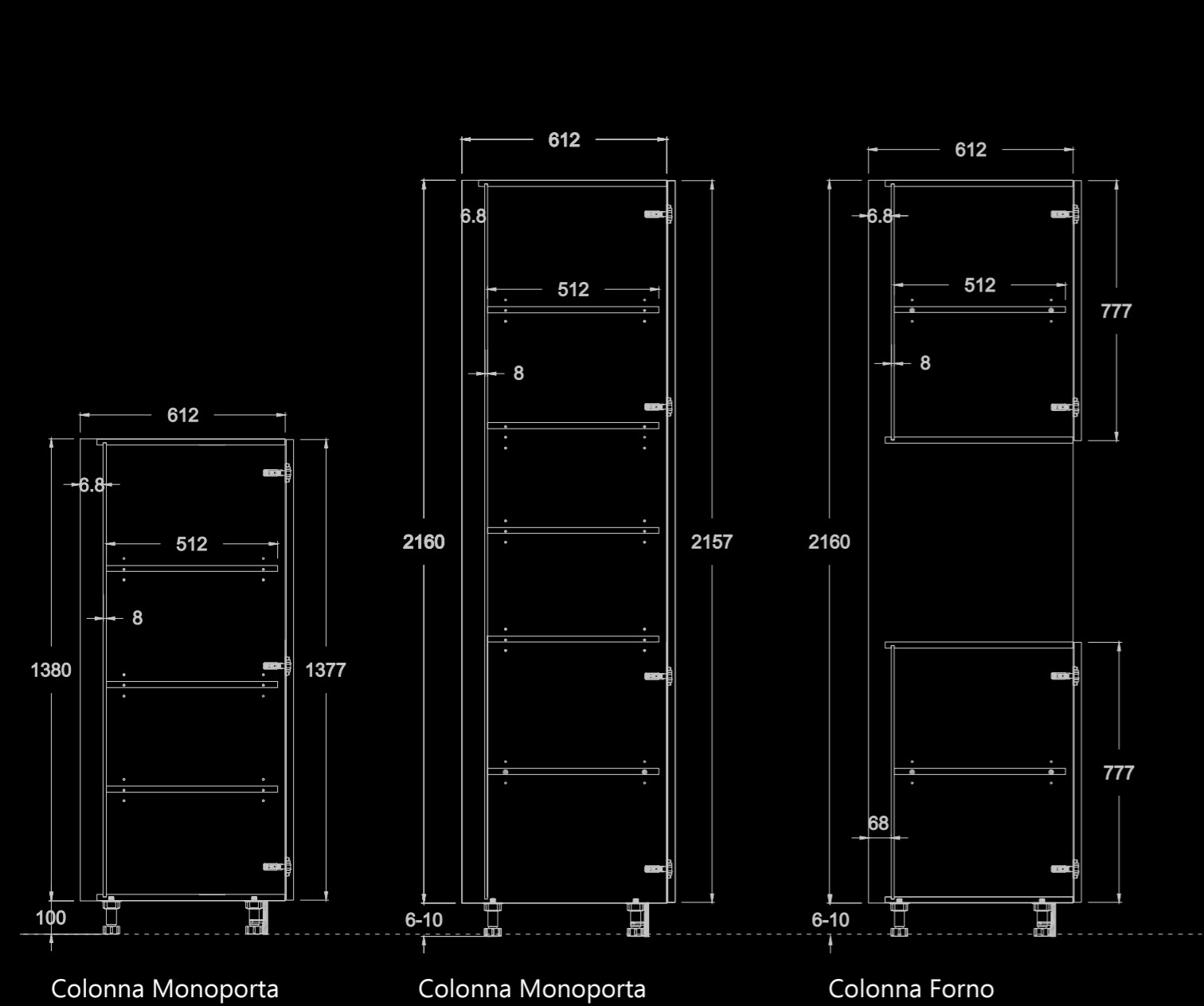
MODULARITA' - Sezioni Basi Maxi h 81



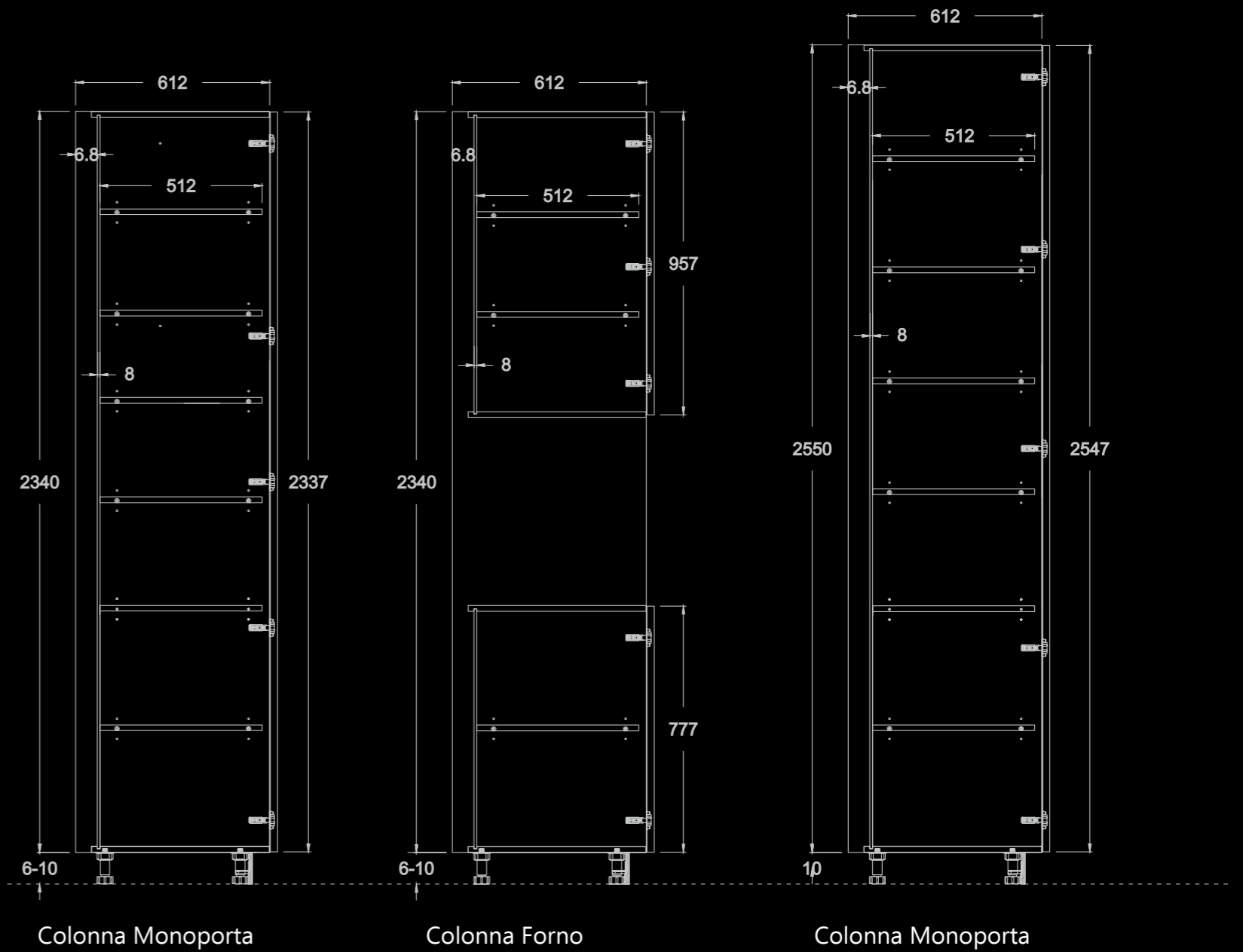
MODULARITA' - Sezioni Pensili



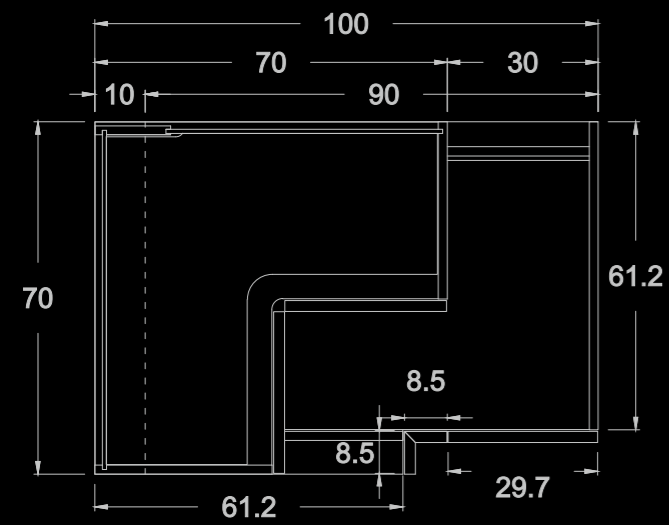
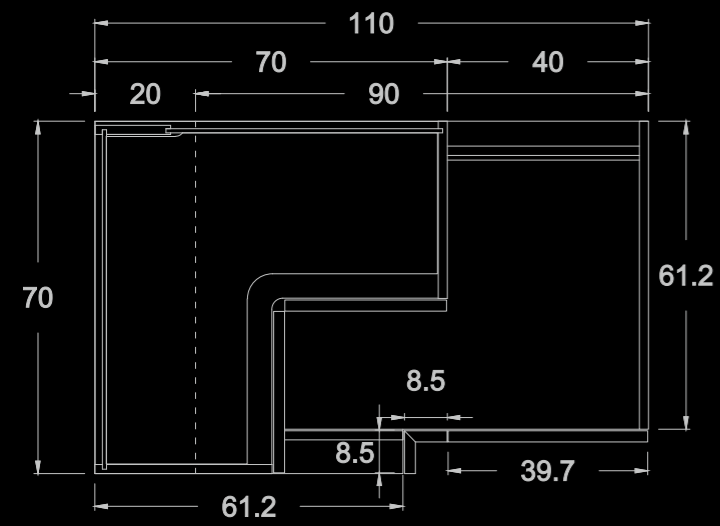
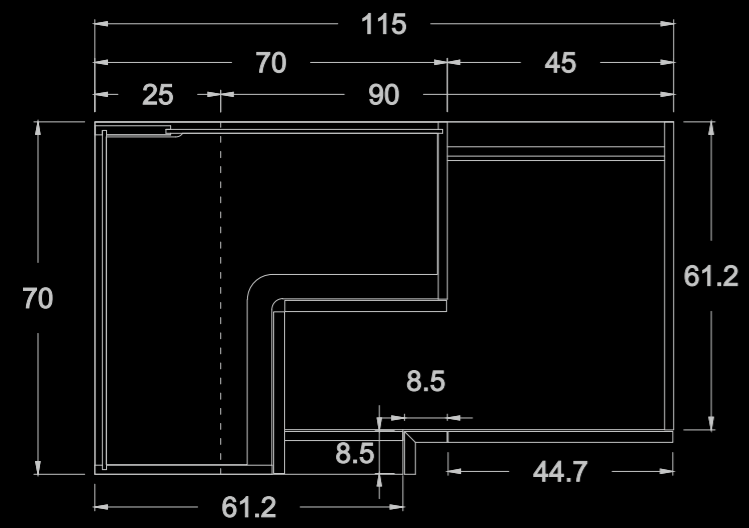
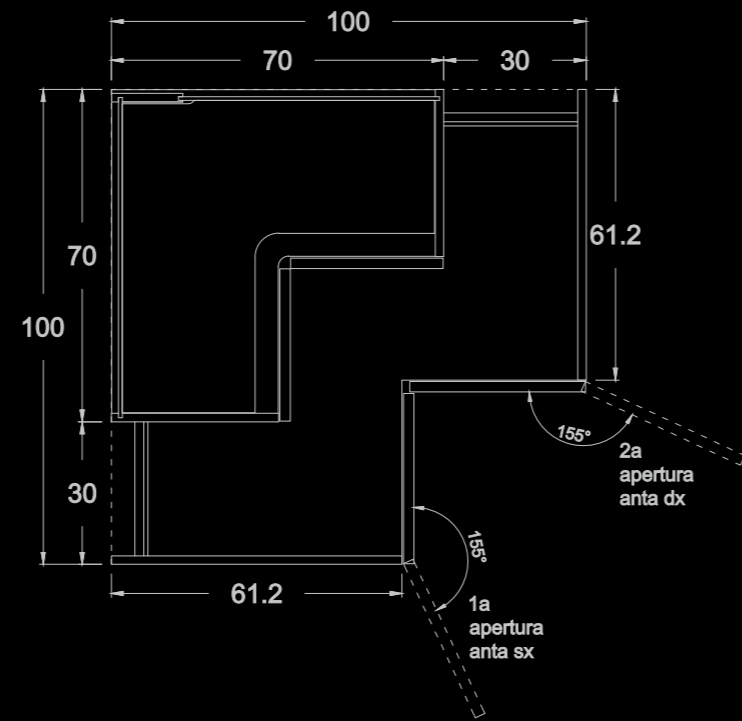
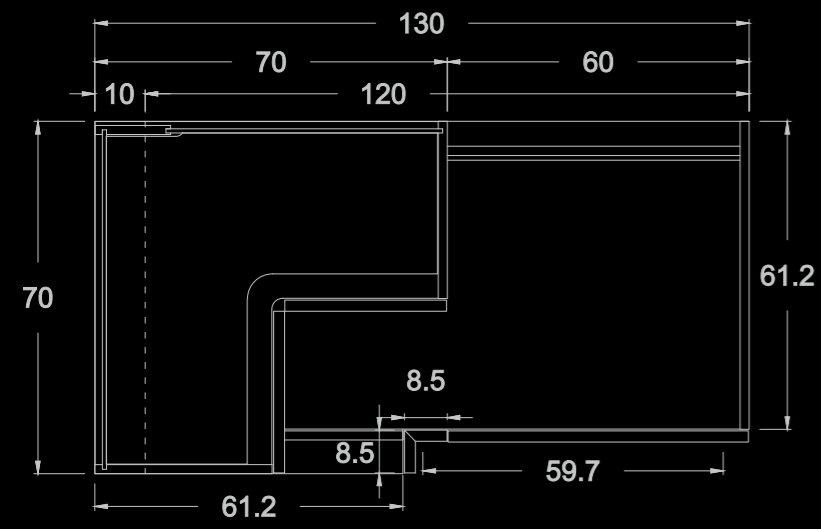
MODULARITA' - Colonne



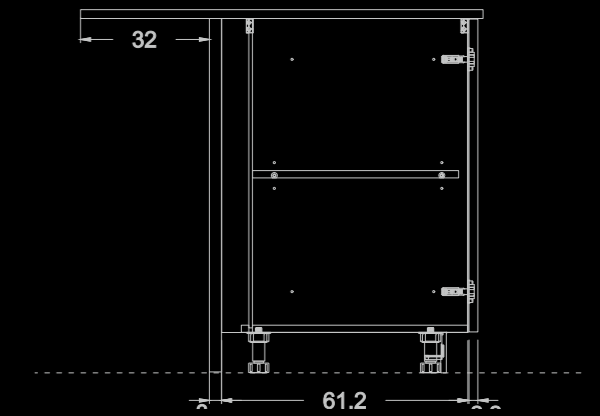
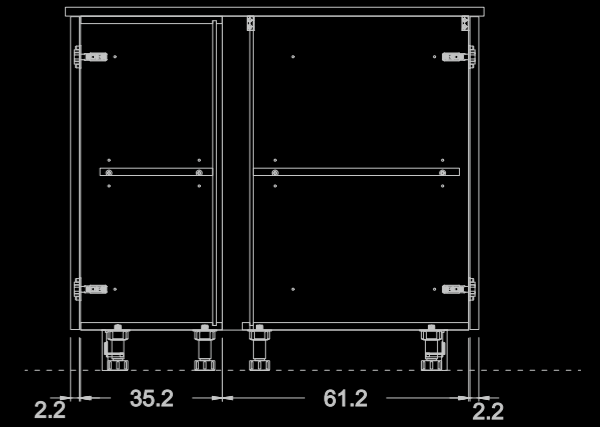
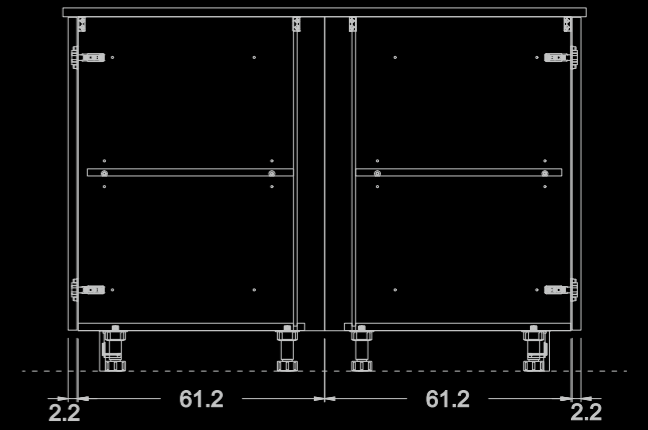
MODULARITA' - Colonne



MODULARITA' - Angoli



MODULARITA' - Accostamenti Isole



Printed

2020

Aster 

ASTER CUCINE s.p.a.
Via Ferraro Manlio sn
61122 Pesaro

Tel. +39 0721/281276
Fax +39 0721/282280
aster@astercucine.it - www.astercucine.it

