

Aster

General information on the product





White



Linen



Anthracite

CERTIFICATIONS

**TSCA Title VI
COMPLIANT**

The melamine cabinet carcasses are comprised of 18 mm thick ecological panels made of high quality particle board covered with non-toxic melamine sheets according to CARB ATCM Phase II and TSCA TitleVI (Toxic Substances Control Act) and EPA (US Environment Protection Agency) standards.



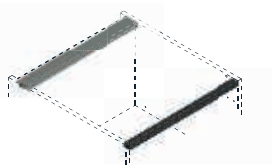
Aster is FSC (Forest Stewardship Council) certified, guaranteeing the use of raw materials derived from responsibly managed forests according to the principles and criteria of the two main standards: forest management certification (FM) and certification of the chain of custody.

STRUCTURE



THICK BACK PANEL

Both in the melamine structure and in the plywood upgrade, the standard back panel is made with 8mm thick panels for additional strength and rigidity.



FRONT AND BACK RAILS IN ALUMINUM

The standard rail inserted in both the front and back of the structure is made of aluminum to ensure greater strength and rigidity of the structure. The rail is available in 3 different finishes according to the standard structures: white, aluminum, and anthracite.



INVISIBLE AND ADJUSTABLE HANGING BRACKETS

The wall units hanging system (pict. 1) are fitted with retractable hinges, which are adjustable from inside by 2 holes on the back panel. The two holes will then be closed by plastic plugs in the colors corresponding to the color of the carcass. They are tested for a maximum capacity of 140kg per pair.

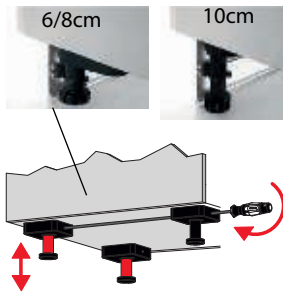


HANGING BRACKETS FOR SUSPENDED BASE UNITS

The wall units hanging system (pict. 2) are fitted with retractable hinges, which are adjustable from inside by 2 holes on the back panel. The two holes will then be closed by plastic plugs in the colors corresponding to the color of the carcass. They are tested for a maximum capacity of 140kg per pair.



STRUCTURE



ADJUSTABLE LEGS

The cabinet legs are made of black PVC and are equipped with a 3-hole mounting base, to ensure greater safety, support, and stability. The rear legs available in 10cm, 8cm, and 6cm sizes, and have an easy front adjustment system with a special screwdriver (supplied with each order). Maximum extrusion 2cm.



ANTI-CURVING SUPPORT

In order to avoid bending of the long structures, an aluminum profile is mounted on all the 100/105/120cm modules directly on the front edge of the shelf for wall units, and on the front and back of shelf for a base units and column pantries. This practical solution adds an aesthetic value that allows for the elimination of the vertical central rod detail. In the white and linen structure, it will be inserted in an aluminum finish; and in the anthracite structure, it will be inserted in an anthracite finish.

DURABILITY



PLYWOOD STRUCTURE

As an upgrade, the structure can be produced with 18mm th. plywood panels of phenolic birchwood tinted in the various standard veneers or lacquered in the various Aster finishes.



HIGH THICKNESS POLYURETHANE EDGE BANDING

ABS structure edges are 1mm thick and sealed with polyurethane glue, which guarantees maximum compactness in the presence of humidity and heat.



ANTI-TILTING SHELVES

Each shelf is fixed with shelf supports fitted with anti-overturning locking devices, concealed within the thickness of the shelf itself. The shelves are edge banded on 4 sides with 1.5mm thick ABS edges. Supplied as grey anthracite with the anthracite carcass, and a grey finish with other structures.



HINGES

Our cabinetry is supplied with Blum hinges which are tested for 100,000 opening/closing cycles and allow an opening from 95° to 155°. They are adjustable on 3 axes, have an automatic clamping system, and are equipped with a soft-closing system. The hinge support is hidden to enhance the overall design.



ONYX HINGES

Available with the cast iron, Slide and Frame 21/52 Factory glass doors, we supply as a standard the new Blum Onyx hinge (black onyx). The same Onyx hinge is also available on request as an upgrade for all other models.



DURABILITY



LEGRABOX BY BLUM DRAWERS AND BASKETS

Our standard Blum 50cm deep drawers are Orione gray painted metal with full extraction and soft closing, and horizontal and vertical adjustability. Guaranteed for over 100,000 opening / closing cycles. Available upgrade to white, black, or steel finishes.



DOVETAIL SOLID WOOD DRAWERS AND BASKETS

Structure 12mm available in oak or walnut finish.
Bottom panel 8mm.
Blum 50cm deep rails.
Horizontal and vertical adjustment.
Soft-closing system.
Guaranteed for over 100,000 opening/closing cycles.



DRAWER AND BASKETS WITHOUT HANDLE OPENING SYSTEMS

Drawers and baskets can be equipped with Tip-On Blumotion by Blum technology that allows opening by applying a light pressure to the door and has a soft closing system (maximum drawer door height: 40cm). There is also the possibility of an automated opening drawers and baskets using the Servo-Drive by Blum system (electronically assisted opening, operated by a slight pressure of the door with soft closing).



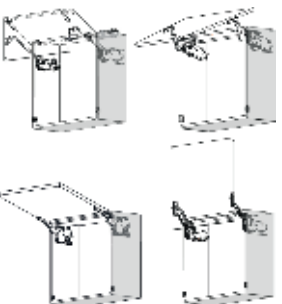
LIFT UP DOORS WITHOUT HANDLE OPENING SYSTEMS

The doors can be equipped with Tip-On System technology that allows opening by applying light pressure to the door.



“PUSH-PULL” OPENING SYSTEMS FOR DOORS WITHOUT HANDLE

The doors can be equipped with Push-pull technology which allows the door to be opened by applying light pressure, using a small cylindrical mechanism inserted in the cabinet structure.



WALL UNIT DOOR OPENING SYSTEMS

All the wall unit lift-up opening systems are “Aventos” by BLUM. There is also the possibility of automated opening doors using the Servo-Drive by Blum system.



SAFETY AND DURABILITY



PACKAGING

All packaging is manufactured to guarantee maximum protection and care to the furniture: use of strong triple-wave cardboard, plastic corners on all sides for additional protection of the edges, and cellophane wrapping for further protection and anti rubbing.

AESTHETICS AND FUNCTIONALITY



MODERN TOEKICKS

The toe-kick is positioned at a distance of 5.5 cm from the front side of the structure. Supplied cut to size, except return sides and linear at exposed sides. Maximum length: 4 linear meters. Available in the following heights:
 6cm in aluminum
 8cm in PVC or aluminum
 10cm in PVC or aluminum
 Available in a variety of finishes.



FRIDGE BOTTOM

Available in black ABS with white perforated grid for air flow.

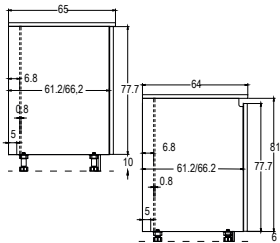
ALUMINUM FRIDGE BOTTOM

The aluminum fridge bottom allows, through the removal of the front part, the insertion of refrigerators with motors protruding in the lower part.



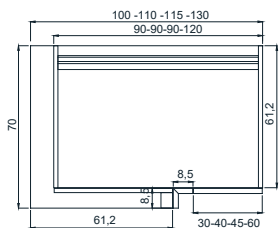
AIR FLOW GRID

With toe-kicks 8-10cm high, the grid is provided in either grey plastic or lacquer.
 With aluminum toe-kicks 6cm high, the grid is cut-out directly in the toe-kick.
 With steel toe-kicks 8cm or 10cm high, the grid is cut-out directly in the toe-kick.



CABINET CONFIGURATION

The base units are made with a 68mm recessed back panel and 50mm bottom panel, to create an opening to allow easy passage of cables and pipes.

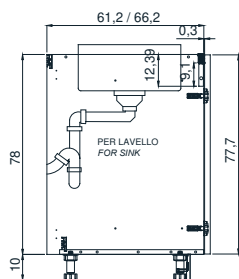


CORNER BASE SOLUTIONS

Corner units can have an adjustable shelf or "Le Mans" or "Magic Corner" systems to solve the accessibility issue of the corner base unit.

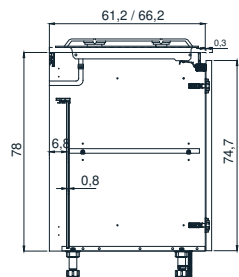


AESTHETICS AND FUNCTIONALITY



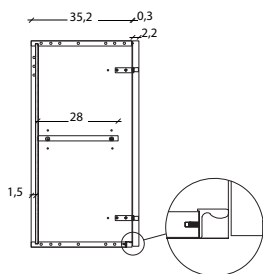
BASE SINK, FRONT FACE AND ALUMINUM BOTTOM

Sink base units are made with an aluminum front rail and a removable melamine cover panel to hide the sink bowl. The bottom of the sink cabinet is covered with an aluminum liner to protect it from water infiltration. As an upgrade, the sink base unit can also be supplied with sides covered in steel.



LOWER BACK PANEL IN COOKING BASE UNIT FOR PIPE PASSAGE

Hob base units are made with an aluminum front rail and a shortened back panel to allow for an easier installation and positioning of cables and wall pipes connections.



WALL UNITS WITH OR WITHOUT C- CHANNEL

Wall units are made with an 8 mm thick back and concealed hangers. The "C-Channel" profile, for wall units without handles, is inserted on the structure in the front edge of the bottom panel. Available aluminum, or anthracite for grey anthracite structures. In all modules greater than 100cm, it is inserted as standard.